

CREATE YOUR Own Adventure

2004-05

group
programs



The New Detroit Science Center

welcome

Get excited about science and technology with a hands-on learning experience at The New Detroit Science Center!

A Science Center group visit is a great way to enhance classroom curriculum or explore new science topics in a dynamic, fun, learning environment. From Preschool through 12th Grade, to Homeschool and Headstart programs, to community groups and senior centers, the Science Center offers hands-on exhibits, classroom programs, theater shows and science demonstrations for visitors of all ages.

This guide will introduce you to all of our group offerings, our convenient group packages and some helpful tips for getting the most out of your Science Center experience. We've even included some "Science Savers" tips on the back cover to help make your visit to the Science Center even more affordable.

Do you have questions or wish to make a reservation?

Give us a call at 313.577.8400, Option 5, Tuesday – Friday, 8 a.m. – 5 p.m.

We look forward to hearing from you and hope your group will visit with us soon!

**Field trips for
grades K-12 correlate
with the State of
Michigan Curriculum
Framework and are
designed to excite,
motivate and inspire
young minds.**

contents

Packages and Rates	1	Dassault Systèmes Planetarium	7
Traveling Exhibits	2	Classroom Programs	8-9
Hands-on Exhibit Laboratories	3	Reservation Procedures . . .	10
Preschool – Kindergarten Programs	4	Planning Checklist	11
Live Demonstrations	5	Additional Information	12
IMAX® Dome Theatre	6	Map	13

packages and rates

Our five packages help make planning easy. Simply choose the package that best fits your group's needs, complete the planning checklist on page 11 and call us to make your reservation.

We recommend that you allow a minimum of 3 hours to a maximum of 6 hours for your group visit experience to include time for lunch and travel between activities.

\$6 SCIENCE BASICS

For one low price, this package includes our four hands-on exhibit laboratories **and** your choice of two: DaimlerChrysler Science Stage, DTE Energy Sparks Theater or Wind Mover.

Recommended Time: 3 hours

\$8 SCIENCE BASICS +1

This package includes all of the features of the Science Basics package **plus** your choice of one Ford Learning Resource Center classroom program **or** traveling exhibit (*Genome: The Secret of How Life Works*, Oct. 2, 2004 – Jan. 2, 2005, or *Monster Trucks*, coming late January 2005). *Recommended Time: 4 hours*

\$10 SCIENCE BASICS +2

This package includes all of the features of the Science Basics package **plus** your choice of either a Dassault Systèmes Planetarium show **or** IMAX® *Dome Theatre* film, and a Ford Learning Resource Center classroom program **or** traveling exhibit (*Genome: The Secret of How Life Works*, Oct. 2, 2004 – Jan. 2, 2005, or *Monster Trucks*, coming late January 2005). *Recommended Time: 5 hours*

\$12 SCIENCE BASICS +3

This package includes all of the features of the Science Basics package **plus** a Dassault Systèmes Planetarium show, an IMAX® *Dome Theatre* film **and** your choice of either a Ford Learning Resource Center classroom program **or** traveling exhibit (*Genome: The Secret of How Life Works*, Oct. 2, 2004 – Jan. 2, 2005, or *Monster Trucks*, coming late January 2005). *Recommended Time: 6 hours*

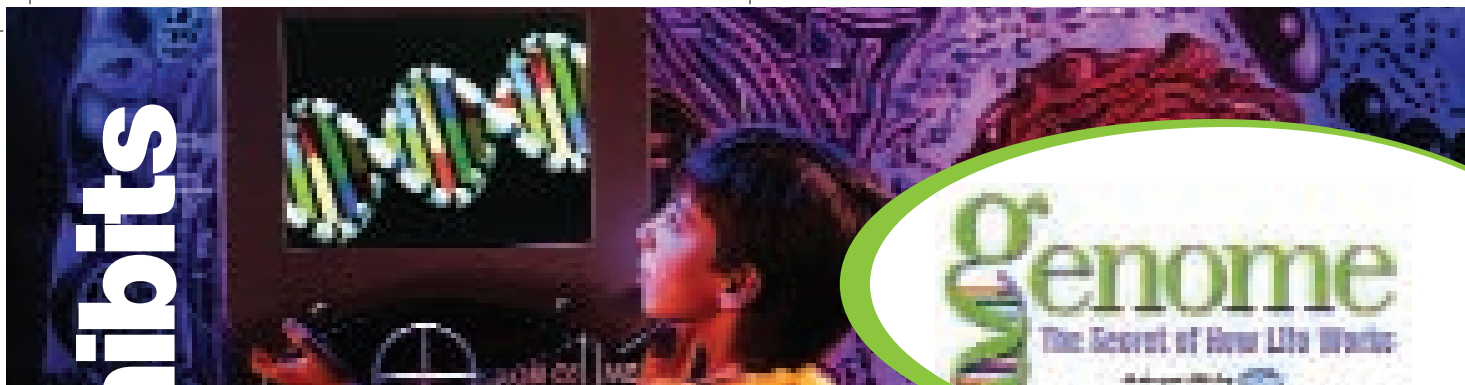
\$4 TINY TOTS

This package is specially designed **just for Preschool - Kindergarten children**. It includes an SBC Children's Gallery program and your choice of the Dassault Systèmes Planetarium shows *Zubenelgenubi's Magical Sky* **or** *Little Star*.

Recommended Time: 3 hours

Note: Chaperones meeting chaperone/student ratio requirements (see pg. 10) receive free general admission (does not include program, theater and special exhibit admission). Package prices are effective for group visits taken after Sept. 1, 2004.

traveling exhibits



Genome: The Secret of How Life Works October 2, 2004 – January 2, 2005

The future is here! Scientists have mapped the human genome - your complete set of genes. Genes are the secret codes, or recipes that make us who we are and that influence who we might become. Your genome is like an enormous recipe book, and with its decoding come new possibilities.

This hands-on exhibit will answer common questions and correct frequently-held misconceptions that surround the human genome, tackling topics such as genetic predetermination, the nature of mutations and the very slight differences in genetic material that separate one human being from another.

A Teacher's Activity Guide and lesson plans for this exhibit are available online at <http://genome.pfizer.com/educate.cfm>

Genome: The Secret of How Life Works is made possible by Pfizer Inc and was produced by Clear Channel Exhibitions in collaboration with the National Human Genome Research Institute (NHGRI), a division of the National Institutes of Health (NIH), and Whitehead Institute/MIT Center for Genome Research.

• Helpful Planning Tips

Recommended Time: 1 hour • Grade(s): 3-12

Package(s): Available with Science Basics +1, +2 and +3 packages.



Monster Trucks: The Science of Extreme Machines

Coming to The New Detroit Science Center Late January 2005!

Monster Trucks: The Science of Extreme Machines is a one-of-a-kind exhibit on monster trucks and the science behind building and driving them. *Monster Trucks* brings together the thrills and spills of motor sports with leading-edge science and technology. Child-friendly interactive displays demonstrate the scientific principles that give these monster machines their remarkable power and still make them safe for drivers and fans alike.

• Helpful Planning Tips

Recommended Time: 1 hour • Grade(s): 3-12

Package(s): Available with Science Basics +1, +2 and +3 packages.



Hands-on Exhibit Laboratories

Our four exhibit laboratories encourage hands-on exploration of scientific principles and stimulate curiosity and learning among children.



GM Motion Laboratory

Experience the magic of mechanics. Marvel at a three-story Foucault pendulum, power a giant V-4 engine or pilot a plane in a wind tunnel. Our marvelous GM Motion Laboratory features 30 interactive exhibits that bring the principles of motion, speed and direction to life.



Herbert H. and Grace A. Dow Foundation Life Sciences Laboratory

Explore the wonders of the microscopic world, the organs of the human body and more with demonstrations and exhibits in our Life Hut. Step into our three-dimensional rain forest for a lesson in ecology.



Matter & Energy Laboratory

With more than 30 interactive exhibits, children can explore the principles of electricity and magnetism, energy conversion and the properties of matter. Power a light bulb with a hand-crank generator. Touch a tornado or turn up the heat in a simulated molecular motion chamber. Watch a hot air balloon rise to the rooftop and then descend again.



Waves and Vibrations Laboratory

A symphony of light and sound, Waves and Vibrations stimulates your senses with exhilarating exhibits that demonstrate how energy is transferred by wave motion. You can make light reflect, absorb and scatter. Light and sound are phenomena we encounter every day. This distinctive lab helps you see them in a whole new light.



Helpful Planning Tips

Recommended Exploration Time: 30-60 minutes
Grade(s): 3-12 • Package(s): Available with all packages

NEW Program!

Teachers, are you looking for greater expertise in one of the subject areas explored in our exhibit laboratories? Let us know! Our Pi Society Science Docents are often available to be in one of our laboratories during your exploration time to answer student questions and provide greater insight into the scientific principles being explored. Docents are subject to availability and must be requested upon making your reservation.





children's GALLERY



Bugs, boats, beehives and more! This is some of the fun stuff Preschool and Kindergarten children can explore. Our 3,500 square foot space, dedicated to early childhood education, features seven engaging exhibit areas to help little ones develop social and motor skills through an interest in science as play. SBC Children's Gallery programs include lively discussions, exciting experiments and hands-on activities to take home.

Preschool – Kindergarten Programs

Dinosaur Dig (July & December 2004)

Learn about different types of dinosaurs and explore fossils as a way to learn about the past.

From Here to There (August 2004)

Learn how things move and the forces of pushing and pulling.

Add it Up! (September 2004 & May 2005)

Explore the basic math skills of counting, sorting and patterning.

All About Me (October 2004)

Discover how foods contribute to strong, growing bodies.

Home Sweet Biome (November 2004)

Examine the roles that plants and animals play in food chains and different habitats.

Magical Magnets (January 2005)

Discover magnetism as students experiment with all types of magnets.

Color Your World (February 2005)

Experiment with prisms and color filters to look at the products of color mixing.

A Bug's Life (March 2005)

Discover how insects move, where they live and what they eat.

Buds and Blooms (April & July 2005)

Explore how plants grow, and observe the parts of a seed in our Visteon Greenhouse.

Sounds All Around (June 2005)

Learn how sounds travel through materials and how sounds can be made louder or softer.

How Does Your Garden Grow?

(Every Tuesday and Wednesday through December 2004)
Calling all pint-size green thumbs! Become a gardener and learn about the elements that seeds need to grow, or practice planting in our Visteon Greenhouse.

Helpful Planning Tips

Recommended Time: 45 minutes

Grade(s): Preschool - Kindergarten

Package(s): Available with the Tiny Tots package.

Visit the SBC Children's Gallery as part of the Tiny Tots package!

This package is specially designed just for Preschool - Kindergarten children. It includes an SBC Children's Gallery program and your choice of the Dassault Systèmes Planetarium shows Zubenelgenubi's Magical Sky or The Little Star That Could.

Price per student: \$4 • Recommended Time: 3 hours

Note: Chaperones meeting chaperone/student ratio requirements (see pg. 10) receive FREE general admission (does not include program, theater and special exhibit admission).



Live Demonstrations

Our five demonstration areas bring science to life! Take in a “hair-raising” show in the DTE Energy Sparks Theater, assemble and race a car through a wind tunnel, learn how to program an industrial robot or zoom by on a hover car.

DaimlerChrysler Science Stage

It's a dramatic showcase of science where air cars zoom by and enthusiastic audiences participate in the show.

Show themes change with each semester and last approximately 30 minutes. Space reservation required.

DTE Energy Sparks Theater

Join us for an electrifying experience that will make your hair literally stand on end.

Our “spark-tacular” performances demonstrate how electricity affects the world, and how electricity and magnetism interact with matter.

Demonstrations last approximately 30 minutes. Space reservation required.

Faurecia Workshop

Experience hands-on demonstrations for all ages in our Faurecia Workshop. Topics range from heat to robots to alternative energy and more.

Demonstrations last approximately 30 minutes.

KUKA Robot

Meet our PC-controlled robot, KUKA, and learn how robots are ideal for automated applications such as machine tending, packaging and cutting, material removal and welding. KUKA has been provided to the Science Center by KUKA Roboter GmbH, one of the world's largest robot manufacturers.

Demonstrations last approximately 15 minutes.

Wind Mover

Use wind and gravity to race your car through the wind tunnel against the clock as it's pushed by tailwinds and slowed by headwinds. Change your car's direction and test its stability and toughness through the great loop.

Demonstrations last approximately 45 minutes. Space reservation required.



Helpful Planning Tips

Grade(s): 1-12

Package(s): Available with all packages.

IMAX® *Dome Theatre*



For shows that keep you on the edge of your seat, nothing beats the excitement of the 67-foot wide, four-story tall IMAX® *Dome Theatre*! The only domed IMAX® theatre in Michigan, our IMAX® uses state-of-the-art technology to create an unforgettable cinematic experience. Showing films that entertain as well as educate, the IMAX® *Dome Theatre* thrills children and adults alike. Please note: due to dark conditions and intense sounds and images, the IMAX® *Dome Theatre* may not be appropriate for some Kindergarten and Preschool audiences.

Adrenaline Rush: The Science of Risk

(through Nov. 19, 2004)

Recommended Grades: 3-12

Experience the rush without the risk! *Adrenaline Rush* explores how the risk-taking involved in such extreme activities such as skydiving can tell us about the world of science and innovation, and about the way we deal with risk in our daily lives.

NASCAR: The IMAX® Experience

(through Jan. 28, 2005)

Recommended Grades: 3-12

The speed, passion and excitement might be what makes NASCAR one of the most popular spectator sports, but it takes more than just some quick laps around a track to keep a stock car moving. Students experience math and science in action in this thrilling and educational IMAX® experience.

The Human Body

(Oct. 2 – Jan. 2, 2005)

Recommended Grades: 5-12

How does the ear hear sound? How do our bones work? What happens to our bodies as we age and develop? How do we digest food? Find out these and other fascinating facts as we dive inside the human body in this incredible IMAX® film that follows a typical family and find out what makes their bodies function. Please note: this film includes scenes of human maturation and birth.

Dolphins

(Tuesdays only, September 2004 – June 2005)

Recommended Grades: Preschool-12

From the dazzling coral reefs of the Bahamas to the wind-swept seas of Patagonia, *Dolphins* takes students on an underwater adventure with inquisitive Atlantic spotted dolphins, acrobatic dusky dolphins and the familiar bottlenose dolphins.

Santa vs. the Snowman

(Nov. 20, 2004 – Jan. 2, 2005)

Recommended Grades: K-6

Santa vs. the Snowman tells the story of a lonely snowman who wages an epic-scale feud with Santa and tries to take over Christmas. Hilarity ensues and friendship triumphs in the end in this animated seasonal favorite by the creator of *Jimmy Neutron*.

Volcanoes of the Deep Sea

Coming January 2005!

Recommended Grades: 3-12

Plunge 12,000 feet into the deep Atlantic to explore astounding volcanic habitats on the Mid-Ocean Ridge and search for an unseen creature believed to be responsible for creating strange hexagonal patterns on the deep sea floor.

Helpful Planning Tips

Recommended Time: 1 hour

Package(s): Available with the Science Basics +2 and +3 packages.

Discover the universe in all its wonder in our Dassault Systèmes Planetarium, one of the finest digital planetarium projection systems in the world. Our shows put you inside the virtual universe as you fly past more than 9,000 stars, plus planets, galaxies and more on a 50-foot wide, three-story high dome. Shows are led by a live presenter and are followed by Q&A sessions. Pre/post activity guides for each show are available on our website at www.detroitssciencecenter.org to enhance your learning experience.



PLANETARIUM

Zubenelgenubi's Magical Sky

Grades: Preschool - 2

In this lively participatory program, characters Tracy the telephone pole, Hydro the hydrant and a talking Sun and Moon come alive as the daytime and nighttime skies are explored. *See this show as part of the Tiny Tots package.*

The Little Star That Could

Grades: Preschool - 3

Join a small yellow star as he searches the galaxy for his planets. This show is a perfect way of introducing young audiences to stars, star colors, planets and our Solar System. *See this show as part of the Tiny Tots package.*

Solar System Adventure

Grades: 3-10

Explore the planets of our Solar System in this live, interactive show! Students will visit the sun, the dusty plains of Mars and gaze at the rings of Saturn as we explore fascinating facts about each of the nine planets.

Sky Tonight Series 2004/2005

Grades: 3-12

Explore objects visible in the night skies of the current season. Learn how to locate constellations, planets and more. We'll also preview upcoming celestial events such as meteor showers and eclipses.

MarsQuest

Grades: 3-12

Patrick Stewart narrates as we explore the red planet. Learn about human fascination with Mars over the ages and the current discoveries from spacecraft missions.

Views of the Universe

Grades: 4-12

Students will explore the differences between objects and their place in the universe. We travel from the constellations to the Solar System and beyond. Our virtual journey includes a trip through a nebula and into a black hole!

Blown Away: The Wild World of Weather

Grades: 4-12

Students will be blown away by this look at the fascinating world of weather as they are placed inside a thunderstorm, swept into a tornado and whisked upwards for a view from space of dynamic weather.

Saturn: Jewel of the Solar System

(through Nov. 19, 2004) • Grades: 4-12

Explore the ringed planet with the Cassini spacecraft mission now in orbit around this mysterious world. We'll look at Saturn's moons, rings and fascinating cloud features as well as present the latest findings from Cassini.

The Search for Life in the Universe

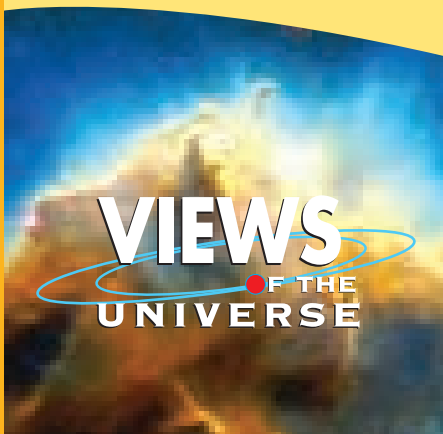
Grades: 6-12

Are we alone in the universe? Host Leonard Nimoy (Star Trek's Mr. Spock) narrates this show that examines the ingredients necessary for life on our planet as we ponder the possibility of life in our Solar System and beyond.

• Helpful Planning Tips

Recommended Time: 50 minutes (35 minutes for Zubenelgenubi's Magical Sky and The Little Star That Could)
Package(s): Available with the Science Basics +2, +3 and Tiny Tots packages


In the Dassault Systèmes Planetarium teachers set the schedule! Pick from any of our nine planetarium shows and our reservations staff will schedule your show at the time you select. Show selection requests are scheduled on a first come, first served basis, so make your reservation early to ensure your choice of show.



Ford Learning Resource Center

Our Ford Learning Resource Center provides five uncommonly cool classroom environments where children can partake in stimulating, hands-on learning programs. Study in space or be surrounded by six North American biomes. Step back in time in our 19th century Life Sciences classroom or into the future with our high-tech Applied Sciences room. Walk through the infinity mirror into our Physical Sciences classroom. Paired with engaging programs, our classrooms make for a truly cool science adventure. *With every classroom program, students develop a make and take project and teachers receive related post-activity worksheets.*

classroom programs

grade LEVEL	 Space Science	 Life Science
1-2	Sky Gazers <i>30 minutes • Offered on Tuesdays and Wednesdays</i> Learn about the characteristics of the sun, moon and Earth. Students will make a take-home project related to the phases of the moon.	Alive and Kickin' (September – January) <i>30 minutes • Offered on Thursdays and Fridays</i> Determine if something is living or non-living. Students will make a take-home project related to the basic unit of life, a cell. Creepy Critters (February – June) <i>30 minutes • Offered on Thursdays and Fridays</i> Learn about the life cycle of insects. Students will make a take-home project about the butterfly life cycle.
3-6	Our Place in Space <i>30 minutes • Offered on Tuesdays and Wednesdays</i> Describe, compare and contrast features of the sun, moon and Earth and the motions of these three bodies. Investigate the physical characteristics of Solar System bodies.	Fit as a Fiddle <i>30 minutes • Offered on Thursdays and Fridays</i> Develop an understanding of what it takes to maintain a healthy body. Students will do an activity on how parts of the body work together and have different roles to keep us alive.
7-8	Rockin' Around the Solar System <i>45 minutes • Offered on Tuesdays and Wednesdays</i> Students compare Earth to the other planets and moons in terms of supporting life. Students will design a life form to live on the planet of their choice.	Diving into DNA <i>45 minutes • Offered on Thursdays and Fridays</i> Why is it so important? How unique is a strand? Get a close up look at real DNA and genetically engineer a creature.
9-12	Amazing Universe <i>45 minutes • Offered on Tuesdays and Wednesdays</i> Learn your celestial address as we find our place in the universe. Explore the nature and life cycle of stars.	Forensic Fun <i>90 minutes • Offered on Thursdays and Fridays</i> Come into our crime lab and solve a crime in this very hands-on workshop.



Applied Science and Mathematics

Measuring

30 minutes • Offered on Tuesdays

Create your own measuring units and measure length, perimeter and area. Students will use a ruler they make themselves to measure and compare units.



Earth Science

Weather Watchers

30 minutes • Offered on Wednesdays and Thursdays

Students learn techniques for observing and recording weather conditions. Students will make a windsock to help them record wind speed.



Physical Science

Matter Matters

30 minutes • Offered on Thursdays and Fridays

Become aware of the states of matter and how they relate to substances such as water through hands-on demonstrations.

Metric Mania

30 minutes • Offered on Tuesdays

An introduction to the metric system. Students use tools to measure length, volume, mass and temperature.

Masters of Disasters

30 minutes • Offered on Wednesdays and Thursdays

An introduction to the causes and effects of natural disasters, volcanoes and earthquakes.

Sounds all Around (September – January)

30 minutes • Offered on Thursdays and Fridays

Students explore the nature of vibration and sound waves.

Light and Color (February – June)

30 minutes • Offered on Thursdays and Fridays

Students experiment with prisms, color filters and pigments to determine the components of white light and color mixing.

Mindstorms

90 minutes • Offered on Tuesdays

Students work together to build and program a Mindstorms robot. Through trial and error they can figure out how their robot can do simple tasks.

Marvelous Meteorology

45 minutes • Offered on Wednesdays and Thursdays

Learn how to read weather symbols and maps. Students will look for patterns and make predictions about weather here in Michigan.

It's Electrifying

45 minutes • Offered on Thursdays and Fridays

Students build, operate and analyze different electrical circuits and experiment with variables that affect each.

KUKA Connection

90 minutes • Offered on Tuesdays

Learn how math is used in the programming and operation of an industrial robot. This class also spends time with our KUKA robot applying what is learned in class.

Weather Forecasting

90 minutes • Offered on Wednesdays and Thursdays

Using raw data, students will make predictions about weather in the United States.

What is an Atom?

90 minutes • Offered on Thursdays and Fridays

Use the periodic table to determine an atom's structure, mass and number.



Helpful Planning Tips

Package(s): Available with the Science Basics +1, +2 and +3 packages.

reservation procedures

To make a reservation, call 313.577.8400, Option 5, Tuesday – Friday from 8:00 a.m. – 5:00 p.m. It is recommended that reservations be made at least three weeks prior to your visit. Please have the following information ready when calling:

- Group Name
- Group Address
- Telephone No. / Fax No. / E-mail
- Date / Arrival Time (select 3 dates)
- Group Contact
- No. of Students
- No. of Chaperones
- No. of Additional Adults
- Package and Lunch Option
- Method of Payment

CHAPERONES

Chaperones are an integral part of any group visit to The New Detroit Science Center. To ensure that all students receive a quality experience, groups are required to provide 1 chaperone for every 10 students. Special needs groups and Preschool – K are encouraged to provide 1 chaperone for every 5 students. It is important that chaperones stay with the group at all times; they will be expected to act as supervisors and monitor the group's activities. All chaperones per the above ratio receive free general admission, but there is a charge for program, theater and special exhibit admission for these chaperones. Any adults above and beyond the 1:10 or 1:5 ratios will be charged the package rate.

DEPOSIT POLICY

A 50% non-refundable deposit is due within 2 weeks of making the reservation. This will guarantee your show or program in the theater and classrooms. The remaining balance is due 2 weeks before the scheduled visit. Groups not submitting their deposit will lose their reservation and their chaperone-ratio discount rate. Purchase orders are not accepted for deposits or payments. Mastercard, Visa, American Express and personal checks are accepted.

CONFIRMATION PACKET

Once your deposit has been received, a confirmation letter will be sent. It will include the day's schedule, Science Center information and a map. Please review this information with your students, chaperones and bus driver before arriving.

LUNCH OPTIONS

Whether you brown bag it or order from our Science Café Lunch Program, be sure to give your students the fuel that they need to learn! Our Lunch Program offers a variety of hot or cold entrees for \$6 per student or adult. Lunch space reservations are required when making your field trip reservation.

CONTACT INFORMATION

THE NEW DETROIT SCIENCE CENTER
5020 John R Street, Detroit, MI 48202
www.detroitsciencecenter.org
fieldtrips@sciencedetroit.org

Reservation Department Office Hours:
Tuesday – Friday, 8:00 a.m. – 5:00 p.m.



This form is for planning purposes only. To make your reservation, contact The New Detroit Science Center at 313.577.8400, Option 5, Tuesday – Friday, 8:00 a.m. – 5:00 p.m. for date and program availability. When calling, please have ready the following information:

1. PACKAGE OPTIONS

Select the package choice that matches your desired field trip and complete the corresponding information.

\$6 SCIENCE BASICS

Includes Science Center general admission with choice of two:

- ☐ DaimlerChrysler Science Stage
- ☐ DTE Energy Sparks Theater
- ☐ Wind Mover

List three preferences to review with reservations team.
Options are based on availability. Space reservation required.

1st Choice: _____ & _____

2nd Choice: _____ & _____

3rd Choice: _____ & _____

\$8 SCIENCE BASICS +1

Includes Science Basics *plus* choice of ONE:

- ☐ Ford Learning Resource Center classroom program
- ☐ Traveling Exhibit

Classroom program name:
(You must also complete Science Basics portion of checklist.)

1st Choice: _____

2nd Choice: _____

3rd Choice: _____

\$10 SCIENCE BASICS +2

Includes Science Basics plus choice of TWO:

- ☐ IMAX® Dome Theatre film **-OR-** Dassault Systèmes Planetarium show **AND**
- ☐ Ford Learning Resource Center classroom program **-OR-** Traveling Exhibit

List three preferences:

1st Choice: _____ & _____

2nd Choice: _____ & _____

3rd Choice: _____ & _____

\$12 SCIENCE BASICS +3

Includes Science Basics plus choice of THREE:

- ☐ IMAX® Dome Theatre film **AND**
- ☐ Dassault Systèmes Planetarium show **AND CHOICE OF**
- ☐ Ford Learning Resource Center classroom program **-OR-** Traveling Exhibit

List three preferences:

1st Choice: _____ & _____ & _____

2nd Choice: _____ & _____ & _____

3rd Choice: _____ & _____ & _____

\$4 TINY TOTS Includes an SBC Children's Gallery Program and Dassault Systèmes Planetarium Show.

Select choice of show:

_____ Zubenelgenubi's Magical Sky

_____ Little Star

2. LUNCH ARRANGEMENTS (OPTIONAL) Due to space availability, lunch areas are available on a first come, first served basis. Reservations are required. Lunch space is scheduled for 30 minutes per group.

- ☐ Pre-ordered lunch (\$6)

No. of students and adults: _____

- ☐ Bring your own brown bag lunch (no charge)

No. of students and adults: _____

3. COST CONFIRMATION

	No. of students	No. of adults & chaperones	Price per person	Totals
Package :	_____	_____	_____	_____
Pre-ordered lunch:	_____	_____	\$ 6.00	_____
SUBTOTAL				\$ _____
SUBTRACT \$6 per chaperone* (\$4 for Tiny Tots)				_____
Chaperone ratio 1:10 (1:5 for special needs groups)				_____
GRAND TOTAL:				\$ _____

* All groups are required to provide 1 chaperone for every 10 students. Special needs groups and Preschool – K are encouraged to provide 1 chaperone for every 5 students. One chaperone for every 10 students receives free Science Basics Package (\$6), but must pay the group rate for IMAX® Dome Theatre, Dassault Systèmes Planetarium, Ford Learning Resource Center classroom program and special exhibit admission. Adults over the 1:10 ratio will be charged the group package rate.

reservation checklist

additional information

ACCESSIBILITY

The Science Center is accessible to visitors with disabilities. Elevators and ramps serve all public areas including the IMAX® *Dome* Theater and Dassault Systèmes Planetarium. A limited number of wheelchairs are available at no cost.

ATM

The ATM is located in the front lobby on Level 3.

COAT RACKS & LOCKERS

Complimentary coat racks are available in the front lobby on Level 3. Lockers are available for 50 cents each on Level 2.

PARKING

Buses may drop off students by entering the Science Center parking lot off of John R Street. Buses may park along Warren Avenue, John R Street or Farnsworth Avenue. Bus drivers receive free General Admission, but must pay the group rate for the IMAX® *Dome* Theatre, Dassault Systèmes Planetarium, Ford Learning Resource Center classroom program and special exhibit admission.



Groups arriving by individual cars pay a reduced rate of \$3 per car.

SCIENCE CAFÉ

Our Science Café offers visitors a choice of simple snacks such as ice cream, soft pretzels and cookies or a complete meal with sandwiches, salads, pizzas and even a daily hot entrée.

SCIENCE STORE

To reinforce the Science Center experience, students have the opportunity to shop at our Science Store. If you do not have time to shop, special arrangements to purchase Science Store products can be made in advance. Please call 313.577.8400, ext. 422.

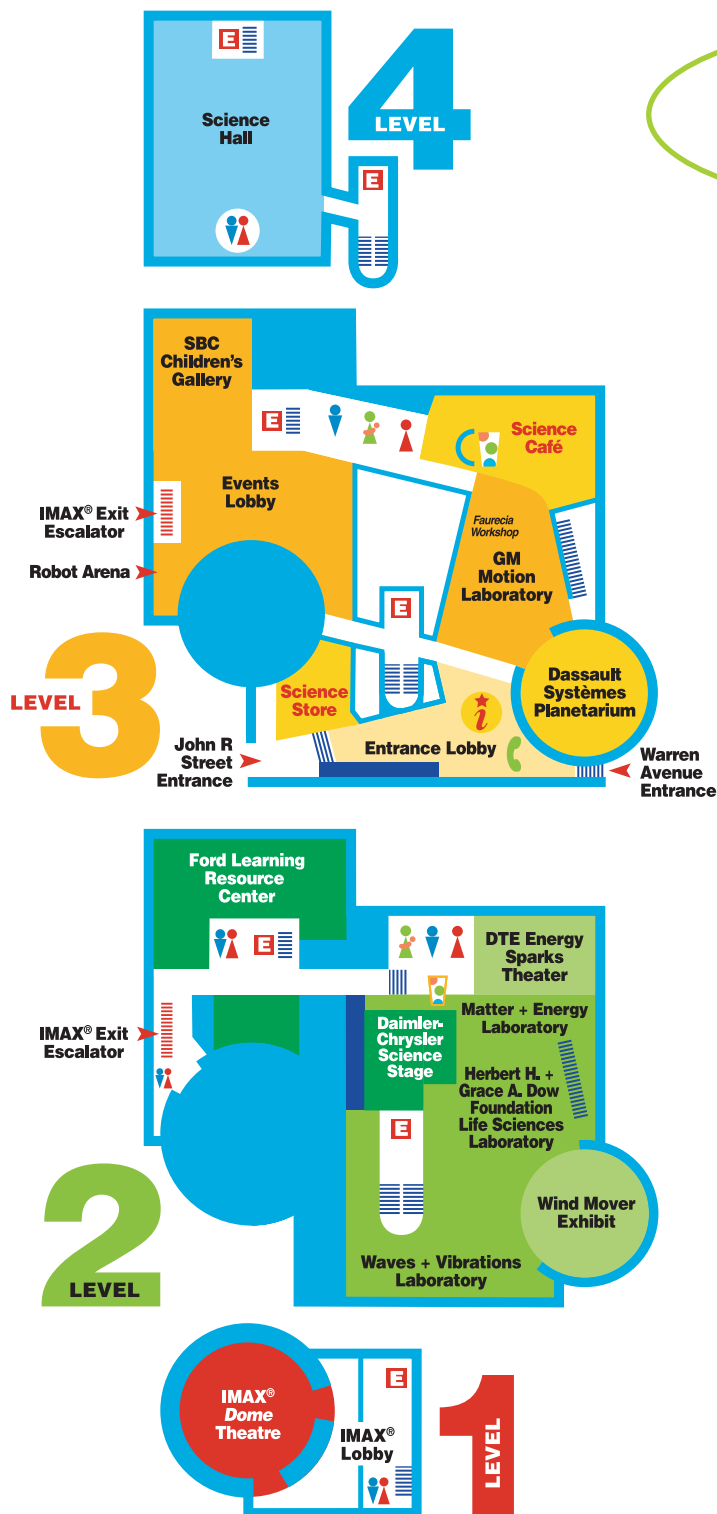
SPECIAL PROGRAMS

The Science Center offers a variety of special programs, including our Science Learning Series weekend workshops, scout workshops and camp-ins, birthday parties, Senior Science Days and more. To learn more about our special programs, please visit our website, www.detroitsciencecenter.org, or call 313.577.8400, Option 5.

additional planning tips

- Provide a copy of your itinerary to all chaperones. It is important for them to know the scheduled destinations.
- Utilize the pre-visit activities available at www.detroitsciencecenter.org before your field trip. Students will be able to better focus on the activities and learn important science concepts when they know what is expected of them before they arrive.
- Copy and distribute maps for all bus drivers to ensure a timely arrival at the Science Center. Please refer to www.mdot.state.mi.us for construction updates and road closures.
- If you have guests that will be using wheelchairs or have other mobility requirements, please let us know when making your reservation so that we may better accommodate your group's needs.

map



The New Detroit Science Center
is Wheelchair Accessible



Listening Devices Available at
the Tickets + Information Desk

- Elevator
- Stairs
- Escalator
- Ramp
- Tickets + Information
- Public Telephone
- Vending Machine
- Men's Restroom
- Women's Restroom
- Family Restroom

AMENITIES

- Science CaféLevel 3
- Entrance LobbyLevel 3
- Restrooms – FamilyLevels 2 • 3
- Restrooms – Men's & Women'sLevels 1 • 2 • 3 • 4
- Science StoreLevel 3
- TelephoneLevel 3
- Tickets & InformationLevel 3
- Vending MachinesLevels 2 • 3

FORD LEARNING RESOURCE CENTER

- Applied Sciences classroomLevel 2
- Earth Sciences classroomLevel 2
- Life Sciences classroomLevel 2
- Physical Sciences classroomLevel 2
- Space Sciences classroomLevel 2

LABORATORIES & EXHIBIT AREAS

- Events Lobby
- Robot ArenaLevel 3
- GM Motion Laboratory
- Faurecia WorkshopLevel 3
- Herbert H. & Grace A. Dow Foundation
- Life Sciences LaboratoryLevel 2
- Matter & Energy LaboratoryLevel 2
- SBC Children's GalleryLevel 3
- Science HallLevel 4
- Waves & Vibrations LaboratoryLevel 2
- Wind Mover ExhibitLevel 2

THEATERS & STAGES

- DaimlerChrysler Science StageLevel 2
- Dassault Systèmes PlanetariumLevel 3
- DTE Energy Sparks TheaterLevel 2
- IMAX® Dome TheatreLevel 1



Passport to Science

**Present this free
pass for one
complimentary
teacher admission
to The New Detroit
Science Center to
pre-plan your visit.
Valid through
April 15, 2005.**

*Cannot be combined with any
other offer. Does not include IMAX® Dome
Theatre and Dassault Systèmes Planetarium
or traveling exhibits. No cash value.
Valid photo I.D. required.*

Science Savers

Looking for ways to fund field
trips to The New Detroit Science Center? Local
businesses, organizations or individuals in your
community may be able to help. Not only can they
provide an educational opportunity for children, but as
a 501(c) 3 non-profit organization, gifts to the Science
Center are tax deductible to the full extent permitted
by law. The Science Center will even send literature
directly to the business, organization or individual
that you contact.

To find out more,
just give us a
call at 313.577.8400,
Option 5.

**WATCH YOUR MAIL OR CHECK
OUR WEBSITE FOR INFORMATION
ON TEACHER PREVIEW EVENTS
AND WORKSHOPS!**



5020 John R Street
Detroit, MI 48202

NONPROFIT ORG.
U.S. POSTAGE
PAID
DETROIT, MI
PERMIT NO. 5919
