

# DETROIT THE NEW Science CENTER

Explore The Possibilities

A NEWSLETTER FOR MEMBERS AND FRIENDS OF  
THE NEW DETROIT SCIENCE CENTER

SPRING  
2002

## Marshall Field's Sunday FunDays AT THE NEW DETROIT SCIENCE CENTER STARTS MOTHER'S DAY, MAY 12!

**S**undays will be more fun than ever when Marshall Field's Sunday FunDays kicks off at The New Detroit Science Center on Mother's Day, May 12. General admission will be FREE on Mother's Day FunDay, with a special, reduced \$2.00 fee for the IMAX® Dome Theatre or Digital Dome Planetarium.

Mother's Day FunDay activities will center on motherhood and families. Children can participate in hands-on activities, music and instructional games that teach important lessons about health and nutrition. Science edu-tainment group Mad Science will perform on the DaimlerChrysler Science Stage. There will be storytelling, photo taking, special enter-to-win prizes for moms and much more!

A special Mother's Day brunch will be offered from 10:30 a.m. – 2:30 p.m. for \$19.95 per adult and \$10.95 per child age four-to-10. Children under the age of four are free. Mothers who are members of the Science Center will receive \$2.00 off the price of brunch. Visitors can enjoy gourmet salads, soups, entrées, a make-your-own pasta station and dessert station. Reservations are available on a first come, first serve basis by calling 313.577.8400, ext. 471.

SEE SUNDAY FUNDAYS

## GET READY TO BLAST OFF!

SPACE STATION LANDS AT  
THE IMAX® DOME THEATRE MAY 11

**3**...2...1...blast off! Get ready to take an incredible journey to the International Space Station when *Space Station* lands at The New Detroit Science Center's IMAX® Dome Theatre on Saturday, May 11.

Narrated by multi-Academy Award® nominee Tom Cruise, *Space Station* is the first cinematic journey to the International Space Station. The giant-screen film documents one of the most challenging engineering feats and important accomplishments by the National Aeronautics and Space Administration (NASA)

SEE SPACE STATION



Marshall Field's  
Sunday FunDays  
IMAX® *Space Station*  
Digital Dome Planetarium Shows  
First Annual 2002 Detroit Science Gala  
President's Letter  
Special Exhibit: *Destination Space!*  
Summer Science Camp  
For Members Only  
Excellent Experiments  
Capital Campaign Donors  
Science Center Trustees

IN THIS ISSUE

## SUNDAY FUNDAYS CONTINUED

Marshall Field's Sunday FunDays will continue on the second Sunday of every month with fun, themed activities for children, families and anyone with an interest in science, engineering and technology. Here's a glimpse of what's in store for the coming months:

### JUNE 9 FIREWORKS FUN

Explore the world of pyrotechnics. Safely learn about fireworks and how Marshall Field's makes the skies over Detroit glow as a part of the International Freedom Festival held on June 26.

### JULY 14 PANDA-MONIUM!

Our newest film, *China: The Panda Adventure* highlights the animal kingdom – from our domestic friends to those in the wild.

### AUGUST 11 ALIEN ADVENTURE

As families take a journey into space, they encounter alien creatures from another planet featuring our Digital Dome Planetarium, special hands-on activities and out-of-this-world guests.

### SEPTEMBER 8 BOLTS & JOLTS

Sparks will fly in our newly enhanced Sparks Theater. It will be an electrifying experience for families as they learn about power, energy and safety.

### OCTOBER 13 WILD ABOUT CHIMPS

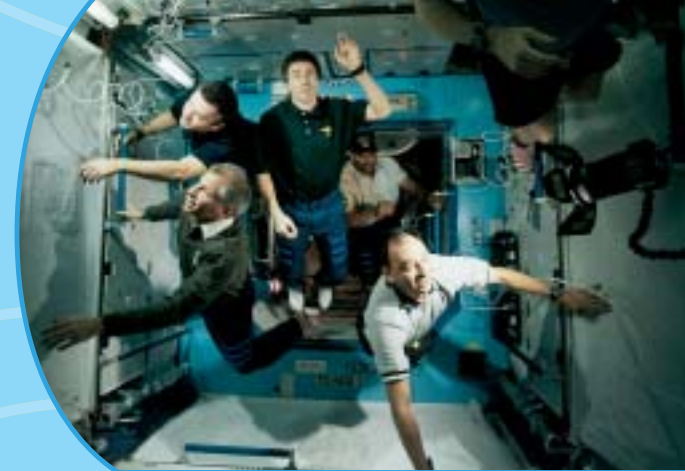
The new film *Jane Goodall's Wild Chimpanzees* opens this weekend in the IMAX® Dome Theatre, highlighting these primates.

### NOVEMBER 10 SCIENTIFIC SCAVENGER HUNT

Families will search for clues in the Science Center to crack the case and have an opportunity to win a special prize.

### DECEMBER 8 FREEZE: SCIENCE OF THE SEASON

It's cold outside and we'll investigate the essence of snowflakes, snow, ice and all the wonders of the season. ❄️



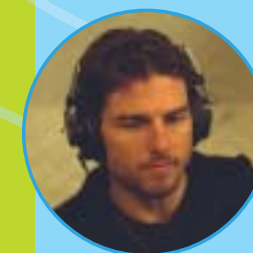
The Space Station shuttle crews fly into the newly-installed Destiny Lab module during the mission in February 2001.

## SPACE STATION CONTINUED

since landing a man on the moon: the construction of the International Space Station.

*Space Station* stars astronauts and cosmonauts who collectively have spent thousands of hours in space. The film captures seven Space Shuttle crews and two resident station crews as they transform the International Space Station into a permanently inhabited scientific research station.

Only a select few have been aboard – now it's your turn to experience life 220 miles above the Earth's surface as the station orbits the planet at 17,500 m.p.h. Get your ticket to space today! 🚀



Tom Cruise narrating Space Station.



## TRAVEL TO INFINITY AND BEYOND

**B**e among the first in Detroit to see new images from the Hubble Space Telescope in the new Digital Dome Planetarium show *Hubble: Images of the Infinite*.

*Hubble: Images of the Infinite* highlights the history and top science findings of the famous telescope, taking you on an unforgettable tour through the Solar System, the Milky Way Galaxy, and to the limits of the visible Universe using spectacular Hubble images and the Digital Dome Planetarium's ability to travel through space and time.

Since its deployment from the space shuttle Discovery on April 25, 1990, the incredible telescope that bears Edwin Hubble's name has provided us with spectacular, awe-inspiring images and enriched our understanding of the Universe. The Hubble Space Telescope is the first telescope to witness super-massive black holes in the centers of distant galaxies, determine the age of the Universe and reveal the structures, shapes and characteristics of young galaxies. COMING JUNE 15



Now for the first time, visitors to the Science Center will have the opportunity to learn and experience the history, design and discoveries of this marvelous instrument by experiencing *Hubble: Images of the Infinite*. ✨

Starlit  
SUMMER NIGHTS



# FIRST ANNUAL 2002 DETROIT SCIENCE GALA

**C**elebrate Detroit's contributions to science, engineering and technology at the First Annual 2002 Detroit Science Gala. The black-tie gala will be held Friday, May 17, at 6 p.m. Gov. and Mrs. Engler, Mayor and Mrs. Kwame Kilpatrick, and Dr. and Mrs. Dieter Zetsche, president and CEO, Chrysler Group, are honorary chairpersons.

The Detroit Science Gala, sponsored by DaimlerChrysler Corp. and supported in part by i2 Technologies, Ford Motor Company and

Our Children

General Motors Corp., will showcase Southeastern Michigan as a "Midwest Valley" of advanced sciences and technologies; highlight the benefits of science education for children; and raise funds to ensure access by all children, regardless of their means, to the exhibits, programs and learning opportunities at The New Detroit Science Center.

Guests will enjoy a sit-down dinner, the tunes of Mel Ball & Colours, special shows in the Digital Dome Planetarium and IMAX® Dome Theatre, and a special appearance by Dean Kamen, the visionary who created the Segway Human Transporter (HT) and founded the FIRST (For Inspiration and Recognition of Science and Technology) Robotics program. Kamen will buzz through the Science Center on his Segway.

There are four distinct levels of sponsorship available – the Gold Leadership Sponsor at \$25,000, the Silver Leadership Sponsor at \$10,000, the Bronze Leadership Sponsor at \$5,000 and the Individual Sponsorship at \$250 per person. Valet parking is provided at the Science Center. For more information, or to make a reservation, please call Dave Gensor at 313.577.8400 ext. 440. ☎

*Segway HT Inventor Dean Kamen will make a special appearance at the First Annual 2002 Detroit Science Gala.*



## PRESIDENT'S LETTER

### SHOOTING FOR THE STARS AT THE NEW DETROIT SCIENCE CENTER

A MESSAGE FROM PRESIDENT AND CEO SHAWN KAHLE

**T**hanks to countless dedicated supporters, staff and volunteers, The New Detroit Science Center continues to shine brightly in the cultural skyline of Detroit.

But the biggest thanks goes to the stars that make us shine so brightly, the more than 342,000 visitors who have come through our doors during our first eight months of operations. These "stars" have helped us surpass our all-time, **full-year** attendance record of 330,000 people in 1990! This is an amazing achievement especially as many museums and cultural institutions face lingering declines in patronage.

With out-of-this world space shows in our Digital Dome Planetarium, school field trips, special events and outstanding new IMAX® feature films, we're well on our way towards our goal of 500,000 visitors in our first year!

As you'll read in this newsletter, the months ahead offer tremendous excitement as we showcase diverse scientific interests. Explore the horizons of the Universe in the IMAX® film *Space Station*. Journey to the other side of the world with *China: The Panda Adventure*. Explore new frontiers at *Destination Space!* It's no wonder that more and more people are planning special celebrations and summer camp experiences at the Science Center.

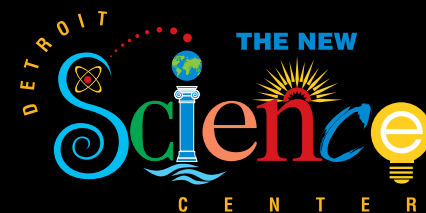
In just a few short weeks, the Science Center will host the First Annual 2002 Detroit Science Gala with special guest Dean Kamen, inventor of the Segway HT, to promote science and technology in Michigan. This event will help us raise critical funds to further ensure access by all children to the incredible wonders of science, engineering and technology at the Science Center.

I am honored to serve you, our valued members and friends, as the new President and CEO of The New Detroit Science Center. Together, we will shoot for the stars and shine bright!

*Shawn M. Kahle*  
Shawn Kahle  
President and CEO  
The New Detroit Science Center



Shawn Kahle, President  
and CEO of The New  
Detroit Science Center



5020 John R Street  
Detroit, MI 48202



MARK YOUR CALENDAR!

Sunday FunDays Start  
Mother's Day, May 12

FREE GENERAL ADMISSION

(May 12 only)

## TRUSTEES OF THE NEW DETROIT SCIENCE CENTER

### BOARD OF TRUSTEES & OFFICERS

**Chairman**  
Francois J. Castaing

**Vice Chairman**  
Robert L. Anthony  
Mason Ferry  
John C. Miller

**Secretary**  
Robert A. Marsac  
**President & CEO**  
Shawn M. Kahle

James P. Bagian, M.D., P.E.  
Tandi Bagian  
Annette Balian  
James Beardslee  
Lillian Bernstein  
James G. Cook, Ph.D.  
Peter T. DeGalan  
Robert W. Denner  
Lynne Ellyn  
Lynn Feldhouse  
Anna Greenstone

Alice Berberian Haidostian  
James B. Issner  
Arthur Johnson, Ph.D.  
Rachel B. Keith, M.D.  
John F. Knutson  
Mada Mallebay-Vacqueur  
Christine T. Miller  
Rodman N. Myers  
Alberto Negro  
M. Cathy Nowosielski, M.D.  
Dominic Pangborn  
Dennis Pawley  
Leroy C. Richie  
Gordon Rinschler  
Catherine A. Rosenthal  
Marianne Schrode  
Thomas G. Stephens, P.E.  
Kathleen Straus  
Chris P. Theodore  
Marianne Schrode  
Dennis Wade  
Albert M. Ward  
Richard D. Ward  
Tara A. Washington, M.D.

NONPROFIT ORG.  
U.S. POSTAGE  
PAID  
DETROIT, MI  
PERMIT NO. 5919

## Need more space at home? Our Science Store has sensational science stuff



**Space & Astronomy Software**  
Explore the Solar System and the Universe with this 4-CD set

**Gift Cards**  
Good for general admission, IMAX® and Digital Dome Planetarium admission and Science Store merchandise

The Science Store 313.577.8400  
at The New Detroit Science Center



# DESTINATION SPACE! IS OUT OF THIS WORLD

SPECIAL EXHIBIT APRIL 20 – SEPT. 2

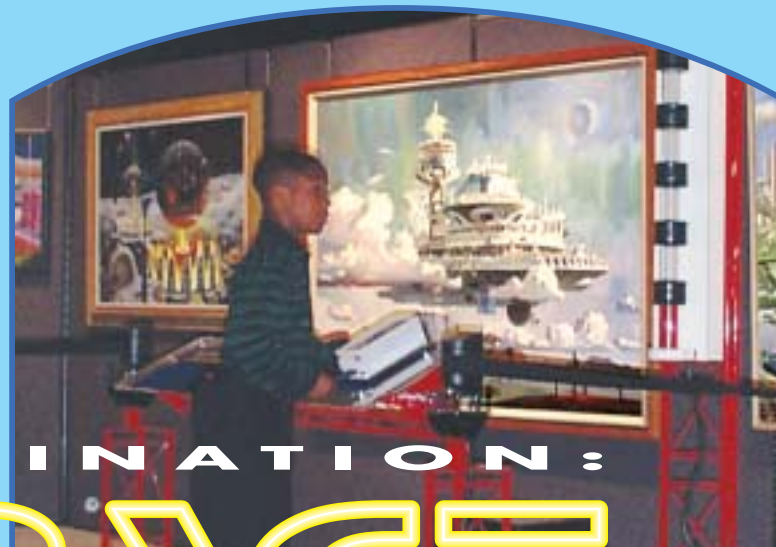
**M**arvel as space exploration comes to life in *Destination Space!* The new special exhibit brings the importance of space exploration to life through a unique combination of science, technology, art and creativity. The result is an immersive experience that educates, inspires and challenges visitors to look beyond modern space exploration to new frontiers.

*Destination Space!* offers an incredible opportunity to become “creative specialists” as visitors explore their own creativity and imagination. The exhibit features more than 75 original works of art by renowned artist Robert McCall that chronicle the history of the space program and speculate about the future of space exploration.

Combined with these awe-inspiring works of art are interactive, hands-on experiences. Visitors will embark on a mission through interactive labs providing first-hand experience of the facilities of an orbiting space station. Create your own space mural in **McCall's Studio**. Try your hand at creating futuristic space stations, robots and rockets in the **K'NEX® Research and Development Center**. Negotiate the living quarters found on an orbiting space station in the **Space Life Lab**. Experience technology that allows astronauts to live and work in space and return safely to Earth in the **Space Shuttle Technology Demo**.

Make The New Detroit Science Center your destination to experience *Destination Space!* ☎

Explore new frontiers  
at Destination Space!



## DESTINATION: SPACE

# SUMMER SCIENCE CAMP

REGISTER NOW!

This summer The New Detroit Science Center offers summer fun with special weeklong camps for children in kindergarten through 8th grade. Members of the Science Center will receive a special discount on camps. It's summer science fun!

### SPACE ADVENTURE

June 24–28 • July 22–26 •  
July 29–August 2 • August 19–23

Experience the final frontier as your camper visits planets, nebulae and other galaxies in the Digital Dome Planetarium. Travel to the International Space Station in the new IMAX® film *Space Station*. In our Mission Control Space Room, explore the scientific principles that make space travel possible, including making your own water-powered rocket—and so much more!

### SCIENCEQUEST

July 8–12 • July 15–19 • August 5–9 • August 12–16

ScienceQuest Camp lets campers explore all of the possibilities of the Science Center with a special emphasis on Rolling Roller Coasters, Slimy Science and Zap – Lights



### SPECIAL CAMP OFFERINGS

Ask about our special **\*Girl Scouts Camp** (July 8–12) and our **Camp Connections** with the Detroit Institute of the Arts (July 22–26).

All campers receive a Detroit Science Center t-shirt. Lunches available for purchase.

### CAMP HOURS

Monday–Friday 9am–3:00pm  
Extended Camp 8am–6:00pm

### CAMP FEES

	5-DAY CAMP	EXTENDED CAMP
DSC Member	\$175	+\$65
Non-Member	\$200	+\$75
Lunch (5 days)	\$20	

To make your reservation for camp, call our  
Camp Coordinator: 313.577.8400 ext.5 ☎

**EXTENDED SUMMER HOURS** Enjoy even more scientific discovery this summer at The New Detroit Science Center! Summer hours will begin Monday, June 17. The Science Center will be open weekdays from 9:30 a.m. to 5 p.m. and weekends from 10:30 a.m. to 6 p.m.

## CAPITAL CAMPAIGN DONORS \$100 AND ABOVE

(July 28, 2001 – March 31, 2002)

## THANK YOU FOR YOUR GENEROUS SUPPORT!

Thanks to the following donors and supporters,  
the Science Center is a facility full of wonder,  
discovery and fun.

To find out how YOU can help support science,  
engineering and technology education for  
children at the Science Center with a **Capital  
Campaign** gift, contact Elizabeth Chilton at  
313.577.8400 ext. 431.

### \$1,000,000 OR MORE

The Herbert H. and Grace A. Dow Foundation

### \$500,000 OR MORE

U.S. Department of Education

### \$100,000 OR MORE

Compuware Corporation  
Mort and Brigitte Harris  
The Oliver Dewey Marcks Foundation

### \$50,000 OR MORE

Community Foundation for  
Southeastern Michigan  
CVS Pharmacy  
Delphi Automotive Systems  
Sylvia and Edward Hagenlocker Fund  
Handleman Category Management Company  
National City Bank of Michigan/Illinois

### \$25,000 OR MORE

Detroit Auto Dealers Association  
Charitable Foundation Fund  
Faurecia Interiors  
Fifth Third Bank  
Alice Kales Hartwick Foundation  
Johnson Controls Foundation  
Leroy C. Richie  
TI Group Automotive Systems Corporation  
  
\$10,000 OR MORE  
Hewlett-Packard Company  
The Herbert and Elsa Ponting Foundation  
The Rodman Myers Family  
Ms. Kathleen Straus

### MORE THAN \$1,000

The Robert and Marjorie Alpern Foundation  
Detroit 300  
Dow Automotive  
Mr. and Mrs. Oscar Feldman  
Mr. and Mrs. Donald Goldbaum  
Tom J. Goldberg  
Cynthia L. Hess  
Bernard L. Maas Foundation  
Mr. and Mrs. Edward T. Mabley  
Mr. and Mrs. John Marx  
Michigan Business and Professional  
Association  
Rhodes Memorial Foundation  
Jerome and Ann Rock  
Safety Intelligence Systems  
Ms. Merle Helen Scheibner  
Tweddle Litho Company  
The Wagoner Family  
Rita and Gary Wasserman  
Mr. and Mrs. Walter Young

### MORE THAN \$100

Mr. and Mrs. Thomas Adams  
Mr. and Mrs. David Cole  
Linda Holland  
Mr. George Johnson  
A. Keith Kossuth  
Mr. and Mrs. Clinton Lauer  
Bob and Leslie Lazzerin  
Dr. Kim Lie and Family  
Michigan First Credit Union  
Fred Ong  
Monna L. Wejrowski  
Mr. and Mrs. Allan P. Whittemore  
Dr. George A. Williams

## ANNUAL FUND

Thanks to the following **Annual Fund**  
contributors, the Science Center is delivering  
the finest science-based exhibits, attractions  
and programs to thousands of children and  
families across Southeastern Michigan.  
Contributions of \$1,000 or more are  
acknowledged as **Sponsors of Science**  
and receive lasting recognition in our  
Donor Gallery.

To find out how YOU can contribute to  
the **Annual Fund**, contact Erika Davis at  
313.577.8400 ext. 437.





## FOR MEMBERS ONLY

### AN OUT-OF-THIS-WORLD DOUBLE HEADER! MEMBERS-ONLY NIGHT (MAY 10)

Get double the dome experience with the Membership Screening of the new IMAX® film *Space Station* in the IMAX® Dome Theatre and *Hubble: Images of the Infinite* in the Digital Dome Planetarium on Friday, May 10, from 7 p.m. – 9 p.m. You'll take spectacular journeys to the International Space Station, the Milky Way Galaxy and to the limits of the visible Universe. Special space surprises are in store for your journey. This exclusive screening event is FREE for members and eligible guests. Watch your mail for more information on this "space-y" event!

### COMING SOON: NEW, ENHANCED MEMBERSHIP CARDS!

Just in time for summer exploration, members will soon receive new, durable membership cards. The cards will feature a colorful new design, bar code and the member's ID number. Watch your mail in the coming months for your new card(s)!



### GIVE THE GIFT OF SCIENCE ALL YEAR LONG

Membership is a great gift for family or friends any time of the year. Buy two or more memberships and save \$10.

### RENEW NOW AND SAVE

Members who renew their membership a month before their expiration date receive two months of membership free. ✂

**Membership Hotline 313.577.8400 ext.433**

## CHINA: THE PANDA ADVENTURE

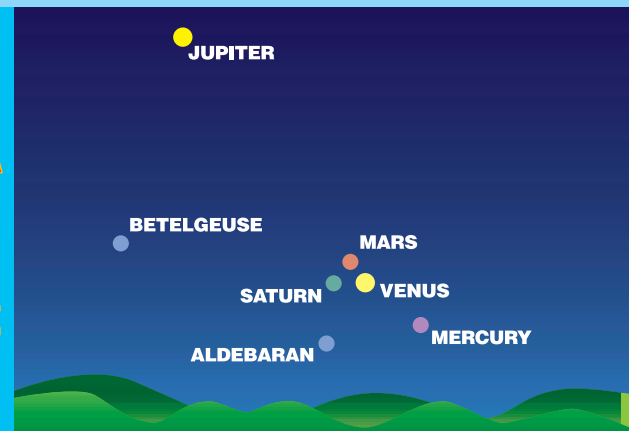
OPENING JUNE 29 AT THE IMAX® DOME THEATRE  
MEMBERS-ONLY PREVIEW JUNE 28

Experience the world of the magnificent and rare Giant Panda as you travel back in time on an exciting expedition through the breathtaking splendor of 1936 China in the IMAX® adventure film *China: The Panda Adventure*.

The large-format film is the true story of Ruth Harkness, a fiercely independent woman who travels to the mysterious forests of China to follow in her late husband's footsteps and achieve his dream of bringing back the first live giant panda to America. As her expedition makes its treacherous journey from Shanghai, up the Yangtze River, through the rugged Min Valley and into the isolated Wolong forests, Ruth must rely on her wits and her determination to survive as she races to find the mysterious creature before a band of trophy-hunting poachers. 🐼



CHECK THIS  
OUT!



Check out the sky this spring as all five "naked-eye" planets align, a celestial wonder that won't happen again for another 59 years!

WESTERN EVENING SKY  
MAY 5, 2002, 9:25pm  
Venus, Mars and Saturn form a triangle. Mercury is located to the lower right, 10 degrees above the horizon. Bright Jupiter is 20 degrees above the star Betelgeuse.

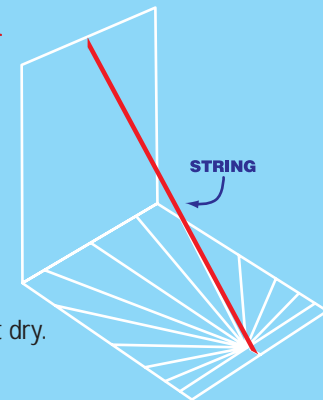


## SOLAR CLOCK

WHAT IT'S ALL ABOUT:  
*Use the sun to tell time.*

WHAT YOU'LL NEED:  
1 piece of string + posterboard (same size as solar clock)  
+ glue + 1 pair of scissors + 1 compass

- WHAT TO DO:
- Cut out the solar clock along the red lines.
  - Glue the solar clock onto posterboard and cut out. Let it dry.
  - Fold the solar clock on the blue line.
  - Cut small notches at the top and bottom (green lines).
  - Run your piece of string from the top notch to the bottom notch.
  - Point your solar clock due south (a compass will help you find the direction).
  - Avoid standing in direct line with the Sun's rays to prevent blocking the string's shadow on your solar clock.
  - Read the time! 🕒



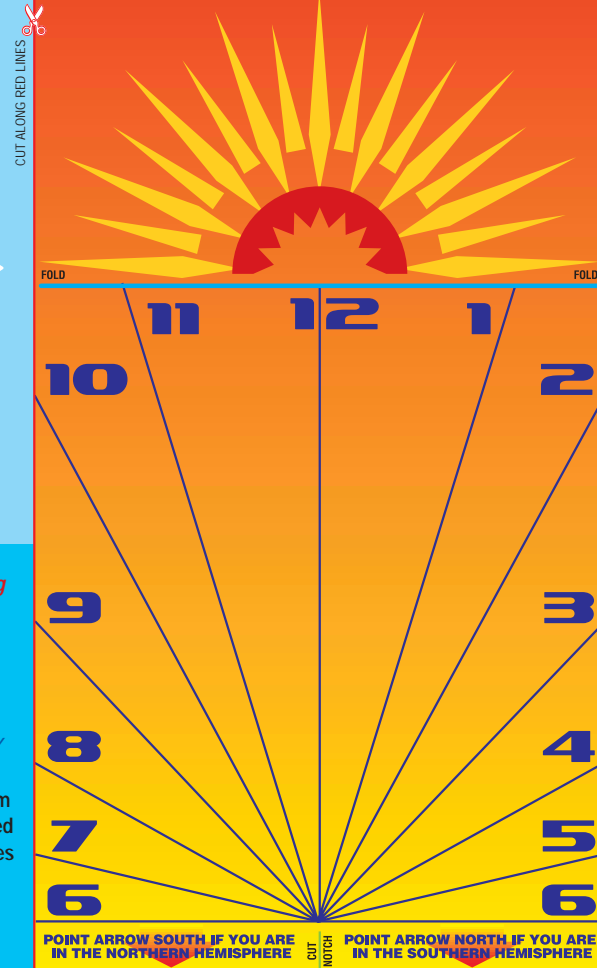
CUT ALONG RED LINES ✂

FOLD

CUT NOTCH



## POCKET SOLAR CLOCK



POINT ARROW SOUTH IF YOU ARE IN THE NORTHERN HEMISPHERE

POINT ARROW NORTH IF YOU ARE IN THE SOUTHERN HEMISPHERE

### SPONSORS OF SCIENCE (JAN. 1–MARCH 25)

Mr. William Abbatt  
Adele and Mike Acheson  
Accenture  
Mr. Richard C. Blumentstein  
Frederick D. Bornman Trust  
Castaing Family Foundation  
Peter D. and Julie F. Cummings  
Bob and Nancy Denner  
Mrs. Marian K. Ferry  
Fifth Third Bank  
Mr. and Mrs. Robert J. Hampson  
Hewlett-Packard Company  
IBM Corporation  
James A. Kelly and Mariam C. Noland

Judy and John Knutson  
MASCO Corporation Foundation  
The McGregor Fund  
Neumann/Smith & Associates  
Dr. Silas Norman, Jr., M.D.  
Dr. M. Cathy Nowosielski and  
Mr. Jeffrey N. Lutz  
Susan and Howard Padgham  
Barbara Jean Pepper  
The Karen & Drew Peslar Foundation  
Mr. and Mrs. Lloyd E. Reuss  
Bernard and Eleanor Robertson  
Rebecca Boylan and Thomas Sidlik  
Elizabeth A. Soby  
The Young Foundation

### ANNUAL FUND CONTRIBUTORS (JAN. 1–MARCH 25)

John and Cindy Anderson  
Mr. and Mrs. Thomas Andreuzzi  
Paul and Shirley Andrews  
Anonymous  
Stanley A. Beattie  
Mr. and Mrs. Bruce D. Birgbauer  
Mr. and Mrs. Andrew Bittinger  
Phil Borchard Enterprises, Inc.  
Mrs. Delores L. Borden  
Elaine Bozin  
Mr. and Mrs. Stephen C. Brownell  
Jeffrey and Candace Buehner  
Mr. Arthur Bull  
Ben and Beverly Burns  
Roy and Ilse Calcagno  
Nancy Caputo, M.D.  
Susan M. Cischke  
Community Foundation for  
Southeastern Michigan

Sam Dabich  
Edward J. Debler, Jr.  
Mrs. Louise Drumm  
Mr. and Mrs. Cameron B. Duncan  
Dr. and Mrs. J. Richard Dunlap  
Betty Jane Emmert  
H. T. Ewald Foundation  
Finkel Family Foundation  
Carol and Peter Forsythe  
Cristina and Scott Garberding  
Mr. John Gehrke  
David J. Gensor  
Mr. and Mrs. Norman Gjostein  
Adele and Michael Glusac  
Brian Goldberg  
Anna and Robert Greenstone  
Peggy Ann Gunn  
Ms. Shirley Harbin  
James and Laurel Harris  
Eric Hespenheide and Judith Hicks  
Mr. Patrick G. Horner

Mr. and Mrs. Joseph L. Hudson, Jr.  
Roger W. Hull, Jr.  
Mr. Steven J. Jacks  
Donald E. Jahncke  
Robert S. Jampel  
Tim and Jean Jennings  
Mr. and Mrs. David M. Kimball  
Mr. and Mrs. John L. King  
Donald A. Lindow  
Mr. and Mrs. Rodney C. Linton  
Mr. and Mrs. Harry A. Lomason  
Hugh F. Mahler  
Ms. Florine Mark  
Ms. G. D. Martinez  
Mr. and Mrs. Robert L. McBrayer  
Bill and Ann McCormick  
Amalia and Ronald McIntyre  
George H. Meyer  
Mr. and Mrs. Eugene A. Miller  
Mr. and Mrs. Edward C. Milligan  
Mr. and Mrs. Claybourne Mitchell, Jr.

Stephen and Wanpen Modell  
Julie and Gary Nitzkin  
Mr. and Mrs. John Onken  
Mrs. Carrie Peebles  
Paul J. Piper  
Mr. and Mrs. Harold Poling  
Doug Quada and Kathy Keljo  
Gordon and Geri Rinschler  
Norman and Dulcie Rosenfeld  
Sarine and Hank Rosman  
Mr. and Mrs. Richard L. Sandifer  
Thomas and Beverly Schmitt  
Fred G. and Stephanie Secrest Fund  
Dr. and Mrs. Mitchell Shek  
Erwin S. Simon  
Ms. Leslie R. Slatkin  
Mr. Frank D. Stella  
Kathleen Straus  
Tamer Foundation  
Dr. L. Murray and Pauline Thomas

John N. Thomson and  
Irene Lazarchuk Thomson  
Mr. and Mrs. Edward W. Turner  
Amanda Van Dusen  
Dr. and Mrs. Paul T. von Oeyen  
Mr. Robert A. Waters  
Mrs. Lawrence M. Weiner  
West End Studios  
Woelfel Research, Inc.  
Bette Jane Wogen  
Yichun Xie  
Rebecca Zaug  
Dr. Regina Zibuck

We took great care in compiling this list and apologize for any errors or omissions.  
Please call our Development Office at 313.577.8400 ext. 431 with any changes or corrections.

Editor: Lisa M. Kang, Vice President – Marketing and Communications  
Assistant Editor: Kelly Fulford, Public Relations Manager  
Contributing Writers: Elizabeth Chilton, Senior Development Manager  
Erika Davis, Development Manager  
Todd Slisher, Director – Theaters  
Contributing Photographer: Tom Vajkov, Science Educator  
Design: Pangborn Design  
©2002 Detroit Science Center