

# 2009-2010 Group Guide



## Contents

1	Group Packages & Rates
2	Special Exhibitions
3	Kids Town
4	Hands-on Exhibit Galleries
5	Curriculum Connection
6	Chrysler IMAX® <i>Dome</i> Theatre
7	Dassault Systèmes Planetarium
8	Live Demonstrations, Shows & Programs
9	Home School “HIP” Days
10	Traveling Science
12	Special Programs
13	Reservation Procedures
14	Planning Your Visit
15	Additional Information
16	Teacher Professional Development

### TINY TOTS

**SCHOOL GROUP: \$5**

This package is specially designed just for Preschool – Kindergarten children. It includes a program in the Kids Town Gallery and your choice of one of our young child Dassault Systèmes Planetarium or Chrysler IMAX® *Dome* Theatre shows.

### EXPLORER

**SCHOOL GROUP: \$6 • ADULT GROUP: \$6.95**

For one low price, this package includes exploration time in our hands-on exhibit galleries, a Toyota Engineering Theater show, Chrysler Science Stage show and a DTE Energy Sparks Theater presentation (space reservations are required to ensure availability at selected times).

### EXPLORER + THEATERS

**SCHOOL GROUP: \$10 • ADULT GROUP: \$11.95**

This package includes all of the features of the Explorer package plus a Dassault Systèmes Planetarium show and any Chrysler IMAX® *Dome* Theatre film.

### THE ACCIDENTAL MUMMIES OF GUANAJUATO

**SCHOOL GROUP: \$14.95 • ADULT GROUP: \$19.95**

This package includes all the features of the Explorer package.



#### NOTES:

*We recommend a minimum of 3 hours to a maximum of 6 hours for your visit to include time for lunch and travel between activities.*

*Chaperones meeting chaperone/student ratio requirements (see pg. 13) receive free Explorer admission (does not include program, theater or special exhibit admission). Package prices are effective for group visits taken after July 1, 2009. Discounts or refunds will not be offered if a group cannot complete all scheduled activities and shows within their visit.*

*Theaters are subject to availability at preferred times.*

*Please see pages 10-11 for Traveling Science rates and options.*



## The Accidental Mummies of Guanajuato

World Debut! **October 2009**



They were miners, fathers, soldiers, farmers and children. They are revered by their descendants and have been visited by millions. They are rare, shocking...and completely accidental. Now, for the first time ever, they are coming to the Detroit Science Center for the world debut of an all-new touring exhibition, *The Accidental Mummies of Guanajuato*.

Featuring 36 accidental mummies who have never been seen outside of Mexico, the exhibit combines science, history and cultural anthropology to immerse the visitor in the world of a Mexican city over 100 years ago where deceased residents naturally mummified in their crypts.

Only 1 in 100 bodies buried in Guanajuato experiences this rare and mysterious process of natural mummification. Visitors will meet these accidental mummies, learn about life in their thriving community, discover the modern-day forensic technology that helps scientists analyze them, and explore a culture that reveres and celebrates them.

*The Accidental Mummies of Guanajuato* meets multiple objectives found in the National Science Education Standards for grades 5-12, including those found in Science Inquiry, Life Science, Physical Science, Science in Personal and Social Studies. A complete educator guide including classroom activities, historical fun facts, a glossary and more will be available this fall for the exhibition.

**School Groups: \$14.95 • Adult Groups: \$19.95**  
**Recommended for ages 13 and older**





Imagine a place where pint-size scientists can become veterinarians, test the laws of physics in a field house, learn about mixtures and solutions in the kitchen of their very own diner, or just splash, crawl and play. That place is Kids Town, a gallery for children ages 5 and under.

Kids Town features engaging activity areas organized into a child-scaled “town” where little ones can develop their social and motor skills while exploring the basic science concepts we encounter every day.

In keeping with the guidelines of the Michigan Board of Education Early Childhood Standards of Quality for Pre-kindergarten, our gallery uses active, hands-on experiences to foster positive attitudes toward science and build a foundation for later and more sophisticated learning.

## Seasonal Programs:

### Summer Sensations (June-August)

Make a splash under the sun, go to a ball game at the Field House or read a book under a tree. It’s all possible in this hottest of seasons at Kids Town!

### Fall Fun (September-November)

Pick an apple, bake a pie at the Diner, or simply discover wonderful colors as the leaves change around us. This season at Kids Town is sure to make you fall for us!

### Winter Wonderland (December-February)

Bundle up and boogie your way into warmer days at Kids Town Center Stage. Around town, observe animals burrowing in, count the sides of a falling snowflake and stay warm in this cool season!

### Spring Has Sprung (March-May)

Watch the flowers bloom, splash in puddles and discover baby animals lurking around the corner. Dig in to what’s new during this fresh season at Kids Town.

*All programs are subject to change and availability. Please note that program capacity is 40 people including all adults and children. Preschool and Kindergarten groups are encouraged to provide 1 chaperone for every 5 students.*





The Detroit Science Center features more than 200 hands-on exhibits that explore space, life and physical science. Highlights include:



Marvel at four towering rockets in our **Rocket Laboratory** for a glimpse into space travel. The models, with cutaway sections showing how they work, are built to 10:1 scale, making them as large as 36 feet tall, stretching from Level 2 of the Science Center to the roof and beyond. Feel the rumble of a launch, see how Apollo astronauts traveled to the moon and enjoy hands-on explaining how rockets work, what makes up rocket fuel and how to launch your own rocket to the planets.

Peer through three telescopes positioned at varying heights that point to various astronomical targets throughout the museum. Work a **Solar System Distance Scale** to position each planet the correct scale distance from the sun. Monitors in this exhibit area also showcase the newest images from the Hubble Space Telescope and Spitzer Space Telescope, along with live NASA launches and images from the International Space Station.



## Life

Start **Working it Off** in this exhibit that stresses the value of fitness and nutrition. Ride a bicycle, walk on a treadmill and propel a wheelchair to demonstrate the effort required to burn off calories. Race to see who can burn off the calories equivalent to various foods and see the spectrum of calories in various foods from low-calorie broccoli to a double cheeseburger. Learn how much effort is required to burn off the calories from these foods.

**Step Into Heart Health** to experience interactive displays that illustrate how the heart works and what can go wrong. Learn about high blood pressure, strokes and heart conditions. Know the causes of heart disease that you can control, and those you can't. See the difference between "good" cholesterol and "bad" cholesterol. Stroll through a 12-foot-tall heart for a close-up, inside look at this amazing organ.



Experience how the manufacturing process turns ideas into reality with the aid of computer design, prototypes, simulations, conveyors, robots, statistics and more in the **United States Steel Fun Factory**.

Walk the **Mini Mac Bridge**, an 80-foot-long pedestrian bridge modeled after the Mackinac Bridge. Learn about some of man's greatest engineering accomplishments and see the devastating result of a poorly engineered bridge.

Strum a few chords on an electric guitar in the **Jam Room** to learn about sound or enter the **Lumenarium** for an enlightening look into our many waves & vibrations exhibits.



**Curriculum Connections help illustrate how our exhibits, shows and programs relate to specific learning objectives from the Grade Level Content Expectations.**

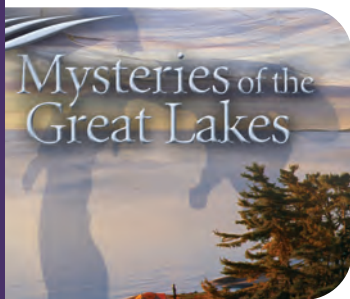
EXHIBITS	Inquiry Standards	Elementary School	Middle School	High School	Careers & Employability
U. S. Steel Fun Factory	S.I.P.E.1 & S.I.A	M.UN;P.PM;	M.UN;P.PM;	P1.1; P2; P3; P4	Standards #1,2,6 & 7
Space Science Exhibits	S.I.P.E.1 & S.I.A	E.ST.E1 & E.ST.E2	E.ST.M1 & E.ST.M2	E2	Standards #1,2,6 & 7
As Time Goes By	S.I.P.E.1 & S.I.A	L.OL; L.EV; L.EC	L.OL	B1	Standards #1,2,6 & 7
Mini Mac Bridge	S.I.P.E.1 & S.I.A	P.PM; P.CM; P.EN; E.E.S;	P.PM; P.CM	P1.1; P2; P3; P4; C4;C5	Standards #1,2,6 & 7
Math Exhibits	S.I.P.E.1 & S.I.A	M.UN; M.TE; N.ME; G.CS;N.FL,N.MR	M.UN; M.TE; N.ME; G.CS;N.FL,N.MR		Standards #1,2,6 & 7
Life Science Exhibits	S.I.P.E.1 & S.I.A	L.OL; L.EV; L.EC	L.OL	L2.p1;B1;B2.4;B4.2	Standards #1,2,6 & 7
Physical Science Exhibits	S.I.P.E.1 & S.I.A	P.PM; P.CM; P.EN; E.E.S;	P.PM; P.CM	P1.1; P2; P3; P4; C4;C5	Standards #1,2,6 & 7
<b>TOYOTA ENGINEERING THEATER</b>	S.I.P.E.1 & S.I.A				Standards #1,2,6, & 7
<b>DASSAULT SYSTEMES PLANETARIUM</b>					Standards #1,2,6 & 7
<i>Secret of the Cardboard Rocket</i>		E.ST.E1 & E.ST.E2			
<i>The Little Star That Could</i>		E.ST.E1 & E.ST.E2			
<i>Eight Planets and Counting</i>		E.ST.E1 & E.ST.E2	E.ST.M1 & E.ST.M2	ES	
<i>WSKY: Radio Station of the Stars</i>		E.ST.E1 & E.ST.E2	E.ST.M1 & E.ST.M2		
<i>What's Up? Your Guide to the Night Sky</i>		E.ST.E1 & E.ST.E2	E.ST.M1 & E.ST.M2	ES	
<i>New Views of the Universe</i>		E.ST.E1 & E.ST.E2	E.ST.M1 & E.ST.M2	ES	
<i>Blown Away: The Wild World of Weather</i>		E.E.S.E2	E.ST.M1 & E.ST.M2	E4.p2; E4.3	
<i>The Greatest Wonders of the Universe</i>		E.ST.E2	E.ST.M1 & E.ST.M2	ES	
<i>Bad Astronomy: Myths and Misconceptions</i>			E.ST.M1 & E.ST.M2	ES	
<i>Two Small Pieces of Glass</i>			E.ST.M1 & E.ST.M2	ES	
<i>Journey to the Edge of Space and Time</i>		E.ST.E2	E.ST.M1 & E.ST.M2	ES	
<b>CHRYSLER IMAX® DOME THEATRE</b>					Standards #1,2,6 & 7
<i>Animalopolis</i>	S.I.P.E.1 & S.I.A	L.OL			
<i>The Alps</i>		G2, G3, G4, SE, ES	G2, G3, G4, SE, ES	G2, G3, G4, SE, ES	
<i>Arabia</i>		G4, G5, W3, H5, SE	G4, G5, W3, H5, SE	G4, G5, W3, H5, SE	
<i>Mysteries of the Great Lakes</i>	S.I.P.E.1 & S.I.A	L.OL; E.SE	L.OL; E.SE	ES; L1	

**As the Detroit Science Center strives to refresh its exhibit offerings, some exhibits may change during the course of the school year. Please contact us if you would like more information about specific exhibits. Curriculum Connections are provided to help teachers better connect the learning opportunities at the Science Center to the lessons taught in their classrooms. They are suggested links to the objectives found in the current Grade Level Content Expectations and are subject to interpretation.**

**WEB RESOURCES – Visit [www.sciencefieldtrips.org](http://www.sciencefieldtrips.org) for scavenger hunts, educator guides and science activity packets for planetarium shows, special exhibits, IMAX films, Kids Town and more!**



Feel like you're a part of the action in our Chrysler IMAX® Dome Theatre! Showing films that entertain, educate and inspire, Michigan's only domed IMAX® theatre surrounds audiences with an experience that thrills students and adults alike. Its 70-foot-wide, four-story-high screen, modern stadium-style seating and state-of-the-art technology creates an ultimate movie experience not to be missed!



## **MYSTERIES OF THE GREAT LAKES**

*(Showing through Nov. 25, 2009)*

*Recommended Ages: 5 – Adult*

Dubbed "inland seas" by early European explorers, the Great Lakes feature some of the most spectacular wilderness scenery on Earth, and a fifth of our planet's fresh water supply. Take a journey through the greatest lake system in the world, and learn the amazing geography, ecology, science and history of the region.



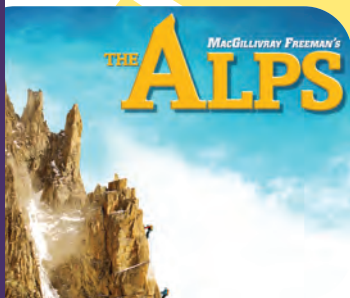
## **ANIMALOPOLIS**

*(Showing through Nov. 25, 2009)*

*Recommended Ages: 2 – 6*

Singing lions, bears that waltz, sea lions turning somersaults. Otters pray, flamingos squawk, a calf who'd rather dance than walk. Children will want to watch it again and again, and you'll like it too! With 12 hilarious segments, each featuring a different animal, this larger-than-life film will stimulate children's imaginations and curiosity about the creatures they're seeing.

*Note: This film is only 30 minutes long instead of the standard 42 minutes. It is designed for Preschool through second grade students.*



## **THE ALPS**

*(August 2009 – February 2010)*

*Recommended Ages: 5 – Adult*

Filled with majestic views of Switzerland's natural beauty, *The Alps* follows the true-life story of mountaineer and journalist John Harlin III, who sets out on an epic personal journey to climb the deadly North Face of the Eiger, the stormiest, steepest peak in all of Europe – 40 years after the same mountain claimed the life of his larger-than-life father, climbing legend John Harlin II.



## **THE LIGHT BEFORE CHRISTMAS**

*(Nov. 27 – Dec. 31, 2009)*

*Recommended Ages: 3 – Adult*

After losing their way on a cold, blustery Christmas Eve, two children are rescued by their friend, the Candleman, an old sage who imparts wisdom, hot chocolate, stories and a little holiday magic. This stunning stop-motion animated film fills the giant screen with lavishly detailed sets and characters inspired by the fascinating designs of renowned artist James C. Christensen.



## **ARABIA**

*(February – August 2010)*

*Recommended Ages: 5 – Adult*

*Arabia* reveals a unique culture, a history full of adventure, an environment of extreme challenges, a people of strong faith, and a chance for a film to bridge cultures and reduce misunderstanding between peoples. An epic combination of historical recreations and contemporary scenes of everyday life, audiences will learn how Arabian society developed through history into what it is today, and discover a visually striking world of fascinating heritage.





Discover the universe in all its wonder in our Dassault Systèmes Planetarium, one of the finest digital planetarium projection systems in the world. Our shows put you inside the virtual universe as you fly past more than 9,000 stars, plus planets, galaxies and more on a 50-foot-wide, three-story-high dome. Shows are led by a live presenter and are followed by Q&A sessions. Pre/post activity guides for each show are available on our website at [www.detroitssciencecenter.org](http://www.detroitssciencecenter.org) to enhance your learning experience.

## THE SECRET OF THE CARDBOARD ROCKET

*Grades: Preschool - 3*

Two young adventurers turn an old cardboard box into a rocket, and with the help of a magical book and their vivid imaginations, blast off on an awesome journey to the most amazing places in the Solar System.

## THE LITTLE STAR THAT COULD

*Grades: Preschool - 3*

Join a small yellow star as he searches for his planets. This show introduces young audiences to stars, star colors, planets and our Solar System.

## NINE EIGHT PLANETS AND COUNTING

*Grades: 3 - 12*

How many planets are in our Solar System? What is the definition of a planet? New discoveries are challenging and changing our answers to these questions, as the continuing debate is explored along with a tour of our Solar System.

## WSKY: RADIO STATION OF THE STARS

*Grades: 2 - 8*

Tune in to a "Top 40" radio station that knows what's up in the universe. Hosted by DJs Moondog Matt and Stella Sunspot, this program features original songs, call-in segments, interplanetary weather reports, Solar System traffic reports, cosmic news and more.

## WHAT'S UP? YOUR GUIDE TO THE NIGHT SKY

*Grades: 2 - 12*

This new seasonal sky show will showcase the constellations, stars and planets in the current season along with the latest news on astronomy and space.

## TWO SMALL PIECES OF GLASS **NEW!**

*Opens September 2009 • Grades: 4 - 12*

Celebrate the International Year of Astronomy with this new planetarium show. Follow two students to a local star party to learn about the history of telescopes and how they work, along with the major discoveries made by these instruments.

## NEW VIEWS OF THE UNIVERSE

*Grades: 4 - 12*

Explore the difference between celestial objects and their location in the universe, while traveling from the Solar System to constellations and beyond.

## BLOWN AWAY: THE WILD WORLD OF WEATHER

*Grades: 4 - 12*

Prepare to be blown away by this exploration of weather, experience the power of a thunderstorm, be whisked away by a tornado and witness weather from space.

## BAD ASTRONOMY: MYTHS AND MISCONCEPTIONS

*Grades: 4 - 12*

Were the Apollo moon landings a hoax? Have aliens visited Earth? Can you discover your future by the stars? Investigate the science behind these and other popular astronomical myths and misconceptions.

## THE GREATEST WONDERS OF THE UNIVERSE

*Grades: 4 - 12*

Join us on an incredible journey exploring the greatest wonders of our Solar System and beyond!

## JOURNEY TO THE EDGE OF SPACE AND TIME

*Grades: 5 - 12*

Travel to super-massive black holes, giant galaxy clusters, the earliest moments of the universe, and parallel universes that challenge the imagination.







**Our demonstrations, shows and programs bring science to life! Take in a “hair-raising” show in the DTE Energy Sparks Theater, participate in a live Chrysler Science Stage show or take a high-tech journey into the exciting world of engineering in the Toyota Engineering Theater.**

## **CENTENNIAL LAB**

Experience hands-on demonstrations and activities for all ages in our Centennial Lab. Discover a variety of science topics with themed activities in Chemistry, Physics, Engineering and Technology. Demonstration times vary depending on activity. *Subject to availability. Reservations not required.*

## **CHRYSLER SCIENCE STAGE**

Live, interactive shows make science fun! Join our stage performers as they conduct exciting educational programs and presentations! *Show themes change on a regular basis and last approximately 30 minutes. A space reservation is required. Subject to availability.*

## **DTE ENERGY SPARKS THEATER**

Enter our amazing Faraday cage and witness the incredible “hair-raising” Sparks Electricity Show! “Spark-tacular” performers demonstrate how electricity affects the world in all forms through electromagnets and static electricity, and helps create plasma and different states of matter. Behold our shocking Tesla coil and the incredible exploding wire! *Demonstrations last approximately 30 minutes. A space reservation is required. Subject to availability.*

## **TOYOTA ENGINEERING THEATRE**

Enter the exciting world of engineering with a theater experience like no other. This immersive, multi-media theater will take you on an interactive journey into the world of real-life engineers, while incorporating state-of-the-art digital video, dramatic computer-controlled lighting, a 43-foot projection screen and active seating.

Our fall show, *Engineering Adrenaline*, features fast-paced, heart-pumping action that will literally take you for a ride as you explore the fascinating world of engineering. Meet an Olympic kayaker who designed and built the world’s largest man-made whitewater rafting park; a NASA Jet Propulsion Lab engineer who is working on a six-legged robotic rover for the next moon mission; and a Toyota engineer who will take you off-road and on the race track as she designs an air delivery system for the Tundra full-size pickup truck. Audiences will be rocked in their seats, as wind blows and water spritzes throughout this one-of-a-kind show.

*Note: Show times are approximately 30 minutes. A space reservation is required. Subject to availability.*

Our Hands-on Interactive Program (HIP) sessions will take home school students on an in-depth exploration of space, physical and life science concepts and are the perfect compliment to our hands-on exhibits. These programs will be thematic and cover grades 1-12 in specialized units.

Each program is conducted in one of our dynamic learning environments and lasts 35-45 minutes. Program capacity is 25 students and up to 10 adults.

**NEW!** Along with museum admission all programs will include the hands-on program and an IMAX® or Planetarium show of your choice. Shows are based on availability.

## MONTH:

Oct. 14

Nov. 10

Dec. 15

Jan. 12

Feb. 9

March 9

April 20

May 4

## THEME:

Going Green

CSI Discovery

Holiday Science

Winter Nights

Famous Scientists

Women in Science

Nutrition

Math Madness



**GOING GREEN:** Learn about the world around you and explore ways to recycle, reduce and reuse materials to reduce our carbon footprint.

**CSI DISCOVERY:** Solve a simple mystery using fingerprints and other CSI technology.

**HOLIDAY SCIENCE:** Discover the science of crystals. Make instant snow and a winter craft.

**WINTER NIGHTS:** Participants will explore the stars as we look to the skies during the winter. Ask one of our planetarium staff questions about the night sky.

**FAMOUS SCIENTISTS:** Celebrate the contributions made by six African American scientists. Make connections to their work and the technology of today.

**WOMEN IN SCIENCE:** Explore famous women scientists and inventors from the past through hands-on activities.

**NUTRITION:** Nutrition, is it really important? Learn about healthy food choices and lifestyles.

**MATH MADNESS:** Math is everywhere. Explore the Science Center as a mathematician to figure out our mathematics challenge.

**COST: \$10**

**TO SIGN UP:** Programs are limited to 25 students. To register, call 313.577.8400, Option 5, weekdays from 8 a.m. - 5 p.m. Content questions may be directed to the Associate Director of Education Programs at 313.577.8400, ext. 439.



We can bring science to you through our **Traveling Science** programs. Enhance fun and learning for schools, groups, “family science nights,” birthday parties and other occasions. Available any day of the week or weekend, daytime or evenings.

## Group Programs

### **IT'S ALIVE IN EEKSTEIN'S LAB** • *For Families and Children Ages 6 – 13*

Dr. Eekstein and Igor have a dilemma! They need help from volunteers as they explain different functions of the brain, circulatory system, heart, lungs and digestive tract in order to give their creature life.

- Each show is 30 minutes, Maximum audience of 250 people.

### **OUR NEIGHBORHOOD IN SPACE** • *For Families and Children Ages 5 – 13*

Earth is our home, the Solar System is our neighborhood and the Milky Way Galaxy is our city. Discover our neighborhood in space as we explore an amazing star and the unique planets in our Solar System.

- Each show is 30 minutes, Maximum audience of 250 people.

### **PAPA LUIGI'S PIZZA PREDICAMENT** • *For Families and Children Ages 6 – 13*

Papa Luigi has to make 1,000 pizzas and he can't do it alone! Volunteers will explore decimals, percentages and fractions while gathering pepperoni, cheese and pizza toppings to save the day!

- Each show is 30 minutes, Maximum audience of 250 people.

### **SCIENCE MAKE-AND-TAKES** • *For Families and Children of All Ages*

Our make-and-take activities not only teach, but are fun and give participants a project to bring home. Each activity takes approximately 5 – 15 minutes. We have a variety of activities on different subjects for all age levels. Make-and-takes may be combined with our other programs.

- Maximum 50 students per session. Includes supplies for two activities.  
\$15 supply charge for each additional activity and/or additional 30 students.
- Each session is 30 minutes. Additional fee for longer sessions.

### **STARLAB** • *For Families and Children Ages 5 - 18*

The STARLAB is an inflatable, portable planetarium. During each session, our educator will give tours of the current sky using the STARLAB's star projector, featuring bright stars, constellations, planets and the moon.

- Each session 30 minutes (2 sessions/hour).
- Maximum 25 participants per session.
- STARLAB is an indoor planetarium with a requirement of a 25' x 30' area, minimum ceiling height of 10' and a grounded outlet.

#### **PRICES:**

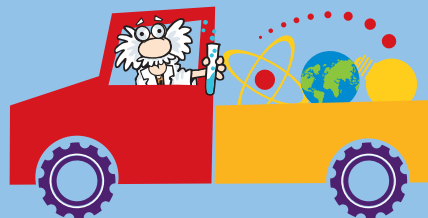
- \$300 for first hour of programming / \$150 for each additional hour.
- Includes two staff members, setup and takedown.
- Travel included within 30 miles of the Detroit Science Center.  
Additional \$.50/mile beyond 30 miles.



## Workshops

Workshops are programs designed for small group settings. In some cases, more than one workshop of the same kind may be run simultaneously.

- Maximum 30 participants per workshop
- Teacher, chaperone or group leader must be present



### Early Childhood Programs • Preschool – K (30 minutes)

**How Does Your Garden Grow?** Explore how plants grow and develop a green thumb as a new seed life is started.

**Color Your World** Explore the wonderful world of color through demonstrations, hands-on activities and an entertaining song.

*Both programs include a story time and group discussion as well as a craft project and exploration station.*

### Early Elementary Workshops • Grades 1 – 2 (30 minutes)

**Sky Gazers** Participants will learn about what they see in the night sky, including the phases of the moon.

**Weather Watchers** Participants will learn about weather and learn about tools to observe and measure weather.

### Upper Elementary Workshops • Grades 3 – 5 (45 minutes)

**Sounds All Around** Participants will use rulers, straws and some more advanced equipment to learn about vibrations and sounds.

**Our Place in Space** Participants will compare the “residents” of our Solar System. They will explore how Earth fits into its neighborhood.

**Green Machine** Participants can ‘green up’ when they engage in this entertaining and educational workshop that deals with all things green. Subject matter includes global warming, smog, acid rain, pollution, the use of natural cleaning products and the ever popular 3R’s – Reduce, Reuse and Recycle. *This workshop can be designed for grades 3-12. Grant funds may be available for Green Machine. Contact 313.577.8400, ext. 238, for more details.*

### Middle School Workshops • Grades 6 – 8 (60 minutes)

**Sounds All Around** Participants will use rulers, straws and some more advanced equipment to learn about vibrations and sounds. There will be an increased emphasis on different types of waves for older students.

**Diving into DNA** Participants will be able to describe what DNA is, where it is found and how it codes for traits. Interactive activities and demonstrations will reinforce ideas learned about DNA.

**Making Math Meaningful** Choose from three different workshops – *Parachute Parts*, *Kreative Kaleidoscopes* or *Missing Money Mystery* – to discover the world of fractions, decimals and percentages with creative hands-on activities.

### High School Workshops (90 minutes)

**Learning through LEGOs** Through programs developed by LEGO Education and the Detroit Science Center, participants will use basic bricks and more advanced parts to learn about life science.

*Discovering Photosynthesis* Help your students understand how plants use carbon dioxide and water to make oxygen and food for themselves using interactive LEGO parts.

*Discovering Chromosomes* Participants will learn about cell division, genes and traits through LEGO parts. Students gain an understanding of heredity in this interactive session.

**Traveling Science Reservations:** Call 313.577.8400, Option 5 • **Content Questions:** 313.577.8400, ext. 238

Traveling Science programs should be booked at least four weeks in advance. The Reservations Department will confirm program availability for the requested date and time within three business days of inquiry.

A 50% non-refundable deposit is due within two weeks of making the reservation with the remaining balance due two weeks before the scheduled program. Program is subject to cancellation if deposit or payment is not received upon due dates. Groups canceling a program less than two weeks before the reserved date will receive a credit to be used at the Detroit Science Center. All programs subject to availability.

Payment can be made by check, MasterCard, Visa or American Express. Purchase orders are not accepted.

Reservations: 313.577.8400, Option 5



## BIRTHDAY PARTIES

The Detroit Science Center is a truly unique venue for hosting a birthday party. Package themes change throughout the year to correspond with our latest offerings. All birthday packages include reserved space for two hours, a Science Center t-shirt for the birthday child and a personal Science Center host/hostess.

## FACILITY RENTALS

Experience a one-of-a-kind venue in Detroit's Cultural Center that may be rented for special events of all types: convention/corporate receptions, fundraisers, holiday parties, cocktail receptions, business meetings, product launches, class/family reunions, weddings & receptions and much more. Up to 2,000 guests can be accommodated in the evening, and smaller groups can use private rooms and the café during the day for business meetings, training sessions or corporate luncheons.

For more information on birthday parties and facility rentals, please call 313.577.8400, ext. 423.



## CAMPS & SCOUTS PROGRAMS

The Detroit Science Center offers a variety of camps and scouts programs throughout the year for a variety of age groups and interests. Our Summer Science Camps offer week-long fun and a variety of themed camp experiences. Our scout workshops and overnights are designed to fulfill badge/pin requirements while providing scouts with a unique experience. Special winter and spring break camp and workshop experiences offer more opportunities for fun and learning throughout the year.

For more information on our camps & scouts programs, please call 313.577.8400, Option 5.



## COOL SCHOOL FUNDRAISERS

The Detroit Science Center is pleased to offer discounted school rates on select levels of Science Center membership. And best of all, up to 41% of your membership purchase goes directly back to the school you are supporting. A Science Center membership is a year-round passport to fun and learning. Members receive free museum admission, discounted or free theater tickets, special members-only events and much more!

To learn more about the Cool School Fundraisers program, please e-mail [fundraisers@sciencedetroit.org](mailto:fundraisers@sciencedetroit.org).

*Note: Membership benefits cannot be applied to a group reservation. Funds raised may be applied to a school field trip to the Science Center.*

To make a reservation, call 313.577.8400, Option 5, weekdays from 8 a.m. – 5 p.m. It is recommended that reservations be made at least 3 weeks prior to your visit. Please have the following information ready when calling:

- |  |                               |
|--|-------------------------------|
| ■ Group Name                           | ■ Number of Students          |
| ■ Group Address                        | ■ Number of Chaperones        |
| ■ Telephone No. / Fax No. / E-mail     | ■ Number of Additional Adults |
| ■ Date / Arrival Time (select 3 dates) | ■ Package and Lunch Option    |
| ■ Group Contact                        | ■ Method of Payment           |

## CHAPERONES

School groups are required to provide 1 chaperone for every 10 students. Special needs groups and Preschool – Kindergarten groups are encouraged to provide 1 chaperone for every 5 students. All chaperones per the above ratio receive free General Admission, but there is a charge for program, theater and special exhibit admission for these chaperones. Any adults above and beyond the 1:10 or 1:5 ratios will be charged the package rate.

## DEPOSIT POLICY

1. A 50% non-refundable deposit is due within 2 weeks of making the reservation. This will guarantee your show or program in the theaters or stages. Your balance is due before or upon arrival.
2. Groups not submitting their deposit will lose their reservation and their chaperone-ratio discount rate.
3. Groups that arrive with more than their final reserved count will be charged for each person over the reserved amount. Should the arrival date attendance fall lower than the confirmed amount, **NO REFUND WILL BE ISSUED.** Instead, a credit will be given that can be used toward a future group visit made within one year.
4. Purchase orders are not accepted for deposits or payments. Mastercard, Visa, American Express and personal/business checks are accepted.

## CONFIRMATION PACKET

Once your deposit has been received, a confirmation letter will be sent. It will include the day's schedule, Science Center information and a map. Please review this information with your students, chaperones and bus driver before arriving.

## LUNCH OPTIONS

Whether you brown bag it or order from our Science Café Lunch Program, be sure to give your students the fuel that they need to learn! Our Lunch Program offers a variety of hot or cold entrees for \$6 per student or adult. Lunch space reservations are required when making your field trip reservation. Please allow 30 minutes for lunch. Due to space availability, lunch areas are on a first-come, first-served basis.

## CONTACT INFORMATION

Detroit Science Center  
5020 John R Street, Detroit, MI 48202  
[www.sciencefieldtrips.org](http://www.sciencefieldtrips.org)  
[fieldtrips@sciencedetroit.org](mailto:fieldtrips@sciencedetroit.org)

Reservation Department Office Hours:  
Weekdays, 8 a.m. – 5 p.m.  
313.577.8400, Option 5







- The Detroit Science Center is a NO SMOKING and NO GUM CHEWING facility.
- Please arrive at program locations at least 10 minutes before the program is scheduled to begin. Late arrivals will not be admitted to programs. There is no late seating for the Chrysler IMAX® Dome Theatre, Dassault Systèmes Planetarium and Toyota Engineering Theater.
- No food or beverage is allowed in any theater or stage.
- Chaperones should remain with the group throughout the visit and be attentive listeners in the programs. We ask that cell phones not be used in program spaces.
- Chaperones are required to stay with the group while they shop in the Science Store or dine in the Science Café.
- Provide a copy of your itinerary to all chaperones. It is important for your chaperones to know the scheduled destinations.
- Lunch periods are 30 minutes ONLY. Please adhere to your scheduled lunch time in order to make sure that the space is clean and ready for the next group. Paper lunch sacks are encouraged.
- If you have guests who will be using wheelchairs or have other mobility requirements, please let us know when making your reservation so that we may better accommodate your group's needs.
- Utilize the pre-visit activities available at [www.sciencefieldtrips.org](http://www.sciencefieldtrips.org) before your field trip. Students will be able to better focus on the activities and learn important science concepts when they know what is expected of them before they arrive.
- Parking: Copy and distribute maps for all bus drivers to ensure timely arrival at the Detroit Science Center. Go to [www.michigan.gov/mdot](http://www.michigan.gov/mdot) for current information on road closings and construction. Directions from all major Detroit freeways can be found on our website.
- As unlikely as it may be, we reserve the right to ask your group to leave the Science Center if your group displays inappropriate behavior or disrespect for the Science Center or other guests.

## CHECKING IN

Please allow 15 minutes prior to your first scheduled program for check-in at the Visitor Services Desk. Refer to your confirmation letter for your arrival time. You will be greeted at the door and escorted to an area for your group orientation.

Your group will be shown where to deposit lunches, coats and other belongings before starting your day.



## ACCESSIBILITY

The Science Center is accessible to visitors with disabilities. Elevators and ramps serve all public areas including the Chrysler IMAX® *Dome* Theatre, Dassault Systèmes Planetarium and Toyota Engineering Theater. The Detroit Science Center is wheelchair accessible and a limited number of wheelchairs are available at no cost. Listening devices are available at the Visitor Services desk.

## ATM

The ATM is located near the Science Café.

## COAT RACKS & LOCKERS

Complimentary coat racks are available. Lockers are available for 50 cents each. The Detroit Science Center is not responsible for lost or stolen items.

## PI SOCIETY SCIENCE DOCENTS

Teachers, are you looking for greater expertise in one of the subject areas presented in our exhibit laboratories? Let us know! Our Pi Society Science Docents are often available to be in one of our laboratories during your exploration time to answer student questions and provide greater insight into scientific principles. Please call 313.577.8400, ext. 418, for more information.

## SCIENCE CAFÉ

Our Science Café offers visitors a choice of simple snacks such as ice cream, soft pretzels and cookies or a complete meal with sandwiches, salads, pizzas and even a daily hot entrée.

## SCIENCE STORE

To reinforce the Science Center experience, students have the opportunity to shop at our Science Store. If you do not have time to shop, special arrangements to purchase Science Store products can be made in advance. Please call 313.577.8400, ext. 422.

## WEBSITE

Check our website, [www.detroitsciencecenter.org](http://www.detroitsciencecenter.org), for information on new shows, programs, exhibits, events and group trip resources.



*The Detroit Science Center is an Equal Opportunity/Affirmative Action employer.*

## PROFESSIONAL DEVELOPMENT FOR TEACHERS **NEW!** College Credit is Now Available!

Engage in programs on various STEM topics geared for both science and non-science teachers. Teachers will receive lesson plans, hands-on activities and resources to use in their classrooms. Topics include environmental science, math, engineering, technology and nutrition.

Capacity for each program is 100 teachers or pre-service teachers. Specific times and dates for the programs have not been determined. Click here to sign up and receive our e-newsletter for educators and be among the first to know about upcoming teacher professional events.

College credit is available through Marygrove College for an additional fee. For more details about college credit, visit [www.marygrove.edu](http://www.marygrove.edu).

Note: Parking and food are NOT provided. Programs are funded by an IMLS grant.

### TOPICS:

#### (ISC 520E) ENVIRONMENTAL SCIENCE

1 or 3 graduate credits

Oct. 3, 2009; 9 a.m. – 5 p.m. at the Detroit Science Center

Oct. 17, 2009; 9 a.m. – 5 p.m. at Marygrove College

An online component follows one month after workshop (3-credit option)

Target grades: 6 – 12

#### (ISC 520F) AMAZING ASTRONOMY

2 graduate credits

Dec. 12, 2009; 12 p.m. – 8 p.m. at the Detroit Science Center

An online component follows for one month after workshop

Target grades: 6 – 12

#### (ISC 520G) NUTRITION AND KITCHEN CHEMISTRY

March 2010

Online component follows for one month after workshop

Target grades: K-8

#### (ISC 520H) SCIENCE TECHNOLOGY & SOCIETY

June 2010

Online component follows for 1 month after workshop

Target grades: 6 - 12

## Educator Appreciation Events

Visit the Educator Guides & Events page at [www.detroitssciencecenter.org](http://www.detroitssciencecenter.org) to learn more about free teacher previews happening this fall and spring!



## MEMBERSHIP discounts

**Educators receive 20% off any level of Science Center membership.\***

**FOR DETAILS, CALL 313.577.8400, EXT. 433.**

\*Membership benefits cannot be applied to a group reservation. Educator discount cannot be combined with school fundraiser rates or any other discount offer.

## GET geeked!

### Pre-Planning Visit

**Show your valid educator I.D. for a FREE pre-planning visit to the Science Center prior to your scheduled field trip.**

Cannot be combined with any other offer. No cash value. Valid photo I.D. required.