

group programs

2005-06



Explore the Possibilities!



welcome

Field trips for grades K-12 correlate with the State of Michigan Curriculum Framework and are designed to excite, motivate and inspire young minds.

“The seeds of great discoveries are constantly floating around, but they only take root in minds well prepared to receive them.” – Joseph Henry

At The New Detroit Science Center, discovery is all around you.



Whether you are a teacher, tour operator, group leader, meeting planner or a science enthusiast, a Science Center group visit is a great way to discover, explore and appreciate science, technology and engineering in a dynamic, fun, learning environment.

The Science Center is yours to discover! Explore hands-on exhibit laboratories, the new blockbuster exhibit *SPACE: A Journey to Our Future* (Opening Nov. 5, 2005), live science demonstrations, shows and programs, Michigan's only IMAX® Dome Theatre and the Dassault Systèmes Planetarium. Experience Traveling Science programs, great birthday parties, scout workshops and overnights, and so much more.

Teachers, go beyond the classroom to enhance curriculum or introduce new science topics. From Preschool through 12th Grade, to Homeschool and Headstart programs, the Science Center offers exciting learning opportunities for students of all ages.

This guide will introduce you to all of our group offerings, our convenient group packages and some helpful tips for getting the most out of your Science Center experience.

Do you have questions or wish to make a reservation? Give us a call at 313.577.8400, Option 5, weekdays from 8 a.m. - 5 p.m.

We look forward to hearing from you and hope your group will visit us soon!

contents

Packages & Rates	1
Hands-on Exhibit Laboratories	2
Preschool – Kindergarten Programs	3
IMAX® Dome Theatre	4
Dassault Systèmes Planetarium.	5
Demonstrations, Shows & Programs ...	6
<i>SPACE: A Journey to Our Future</i>	7
Traveling Science	8-9
Scout Workshops & Camp-Ins.	10-11
Birthday Parties	12
Planning Your Visit	13
Reservation Procedures	14
Reservation Checklist	15
Map	16
Amenities	17

group packages & rates

Our group packages help make planning easy. Simply choose the package that best fits your field trip needs, complete the planning checklist on page 15 and call us to make your reservation.

We recommend that you allow a minimum of 3 hours to a maximum of 6 hours for your visit to include time for lunch and movement between activities.

\$4 TINY TOTS

This package is specially designed **just for Preschool - Kindergarten children**. It includes an SBC Children's Gallery program and your choice of the Dassault Systèmes Planetarium shows *The Sky Above Mister Rogers' Neighborhood*® (Opens Feb. 7, 2006), *Zubenelgenubi's Magical Sky* **or** *Little Star*. *Recommended Time: 3 hours*

\$6 EXPLORER

For one low price, this package includes Exploration Time in our hands-on exhibit laboratories, a DaimlerChrysler Science Stage show **and** DTE Energy Sparks Theater presentation. *Recommended Time: 3 hours*

\$8 PLANETARIUM EXPLORER

This package includes all of the features of the Explorer package **plus** a Dassault Systèmes Planetarium show. *Recommended Time: 4 hours*

\$10 EXPLORER PLUS

This package includes all of the features of the Explorer package **plus** your choice of one: IMAX® Dome Theatre film, **or** *SPACE: A Journey to Our Future* traveling exhibit (Nov. 5, 2005 – May 14, 2006). *Recommended Time: 4 – 5 hours*

\$12 DOUBLE DOME EXPLORER

This package includes all of the features of the Explorer package **plus** a Dassault Systèmes Planetarium show **and** IMAX® Dome Theatre film. *Recommended Time: 4 – 5 hours*


\$14 SPACE SPECTACULAR

This package includes the traveling exhibit *SPACE: A Journey to Our Future* **and** your choice of two: Exploration Time in our hands-on exhibit laboratories, a Dassault Systèmes Planetarium show **or** an IMAX® Dome Theatre film. *Recommended Time: 4 – 5 hours*

NEW

\$8 FUN SMARTS! Science + History Program

Thanks to the generosity of the Hudson-Webber Foundation, The New Detroit Science Center and Detroit Historical Museums are pleased to offer the FUN SMARTS! group program to select schools. This \$8 package includes admission to both institutions and complimentary transportation. Availability is limited. **FOR DETAILS, CALL 313.577.8400, OPTION 5.**

 *Note: Chaperones meeting chaperone/student ratio requirements (See pg. 14) receive FREE general admission (does not include program, theater and special exhibit admission).*

Package prices are effective for group visits taken after June 19, 2005.

Hands-on Exhibit Laboratories

Our exhibit laboratories encourage hands-on exploration of scientific principles to stimulate curiosity and learning.



GM Motion Laboratory

Experience the magic of mechanics. Marvel at a three-story Foucault pendulum, power a giant V-4 engine, touch a tornado or pilot a plane in a wind tunnel. Our marvelous GM Motion Laboratory features 30 interactive exhibits that bring the principles of motion, speed and direction to life.



Herbert H. and Grace A. Dow Foundation Life Sciences Laboratory

Explore the wonders of the microscopic world, the organs of the human body and more with demonstrations and exhibits in our Life Hut. Explore the workings of the human heart in the new exhibit Step Into Heart Health™.



Jean & Sam Frankel Matter & Energy Laboratory

With more than 30 interactive exhibits, students can explore the principles of electricity and magnetism, energy conversion and the properties of matter. Power a light bulb with a hand-crank generator or turn up the heat in a simulated molecular motion chamber. Watch a hot air balloon rise to the rooftop and then descend again.



Waves and Vibrations Laboratory

A symphony of light and sound, Waves and Vibrations stimulates your senses with exhilarating exhibits that demonstrate how energy is transferred by wave motion. Learn about the physics of sound and the technology of music in The Jam Room. Make light reflect, absorb and scatter. Light and sound are phenomena we encounter every day. This distinctive lab helps you see them in a whole new light.

Coming
FALL 2005

Space Laboratory

Explore the depths of space through these new, interactive exhibits. Walk the scale of the Solar System, discover how big a billion really is and look through telescopes in the first phase of this new laboratory that will bring space down to Earth.



Helpful Planning Tips

Recommended Exploration Time: 30-60 minutes

Grades: 3-12 • Packages: Available with all packages



Pi Society Science Docents Teachers, are you looking for greater expertise in one of the subject areas presented in our exhibit laboratories? Let us know! Our Pi Society Science Docents are often available to be in one of our laboratories during your exploration time to answer student questions and provide greater insight into scientific principles.

Ford Learning Resource Center Our Ford Learning Resource Center provides five uncommonly cool classroom environments that educators and group leaders may reserve to conduct programs or use as "home base" during group visits. Study in space or be surrounded by six North American biomes. Step back in time in our 19th century Life Sciences classroom or into the future with our high-tech Applied Sciences room. Walk through the infinity mirror into our Physical Sciences classroom. *Space reservations required.*



children's GALLERY

Bugs, boats, beehives and more! These are some of the wonders Preschool and Kindergarten children can explore. Our 3,500 square foot space, dedicated to early childhood education, features seven engaging exhibit areas to help little ones develop social and motor skills through an interest in science as play. SBC Children's Gallery programs include lively discussions, exciting experiments and hands-on activities to take home.

Preschool – Kindergarten Programs

Weather *(August 2005)*

Examine the Four Seasons and how we experience them in Michigan.

Sounds All Around *(September 2005)*

Learn how sounds travel through materials and how sounds can be made louder or softer.

All About Me *(October 2005)*

What makes us who we are? Wee ones will discover the basic characteristics that define each of us.

Space *(November 2005)*

Blast off into an out-of-this-world exploration of the space beyond our planet.

Water Wonders *(December 2005)*

Learn about the three states of water and the effect that water has on the plants and animals that live in it.

All the Animals in My Family *(January 2006)*

Examine different animals. Learn how to classify them by observable body characteristics and environmental needs.

Dinosaur Dig *(February 2006)*

Learn about different types of dinosaurs and explore fossils as a way to learn about the past.

Space *(March 2006)*

Blast off into an out-of-this-world exploration of the space beyond our planet.

A Bug's Life *(April 2006)*

Discover how insects move, where they live and what they eat.

Color Your World *(May 2006)*

Experiment with prisms and color filters to discover the magic of color mixing.

Going, Going Green! *(June 2006)*

Learn about the forces of pushing and pulling, how things move, and discover ways to conserve energy.

Helpful Planning Tips

Recommended Time: 45 minutes

Grades: Preschool - Kindergarten

Packages: Available with the Tiny Tots package.

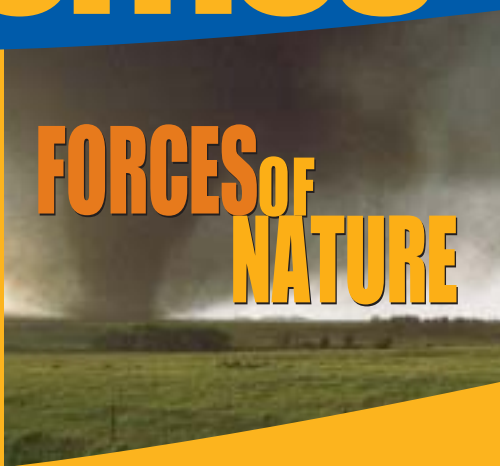
Visit the SBC Children's Gallery as part of the Tiny Tots package!

This package is specially designed just for Preschool - Kindergarten students.

See page 1 for package details.



under the Domes



IMAX[®] Dome Theatre

For shows that keep you on the edge of your seat, nothing beats the excitement of the 67-foot wide, four-story tall IMAX[®] Dome Theatre! The only domed IMAX[®] theatre in Michigan, our IMAX[®] uses state-of-the-art technology to create an unforgettable cinematic experience. Showing films that entertain as well as educate, the IMAX[®] Dome Theatre thrills students and teachers alike. Please note: due to dark conditions and intense sounds and images, the IMAX[®] Dome Theatre may not be appropriate for some Preschool and Kindergarten audiences.

Magnificent Desolation: Walking on the Moon (Fall 2005 – May 2006)

Recommended Grades: 3-12

Only 12 people have walked on the moon. This fall, you're next! *Magnificent Desolation: Walking on the Moon*, produced by Tom Hanks and Gary Goetzman, takes you to the surface of the moon to walk alongside the extraordinary Apollo astronauts who have stepped upon its surface. With never before seen photographs, renditions of the lunar landscape and previously unreleased NASA footage, audiences will be immersed in the life-changing experiences of astronauts. Discover what they saw, heard, felt, thought and did while on the lunar surface.

Forces of Nature (through Jan. 28, 2006)

Recommended Grades: 3-12

It is one thing to contemplate the immense power of nature, another to experience these forces first-hand. *Forces of Nature* showcases the awesome spectacle of earthquakes, volcanoes and severe storms as viewers follow scientists on their groundbreaking quests to understand how these natural disasters are triggered. Audiences will learn what is being done to predict and prepare for these events – and minimize their deadly effects – as they come face-to-face with Earth's most destructive forces.

Journey Into Amazing Caves (Sept. 20 – Dec. 31, 2005)

Recommended Grades: 2-12

Take an adventure to underground landscapes that are as beautiful and vital as any place on Earth. During *Journey Into Amazing Caves*, caving expedition leaders Nancy Aulenbach and Dr. Hazel Barton wriggle through tiny, twisting passages, drop into gleaming blue labyrinths of ice, swim through flooded underground vaults, and enter a world so extreme that the microscopic creatures who live there are called extremophiles. Aulenbach and Barton explore environments that are rarely seen by others and transport the audience into a world of adventure and discovery.

➔ **Check our website,
www.detroitsciencecenter.org,
for new IMAX[®] Dome Theatre films
coming in winter/spring 2006!**

Helpful Planning Tips

Recommended Time: 1 hour

Packages: Available with the Explorer Plus, Double Dome Explorer and Space Spectacular packages



winter NIGHTS

Discover the universe in all its wonder in our Dassault Systèmes Planetarium. Our shows put you inside the virtual universe as you fly past more than 9,000 stars, plus planets, galaxies and more on a 50-foot wide, three-story high dome. Shows are led by a live presenter and are followed by Q&A sessions. Pre/post activity guides for each show are available on our website at www.detroitssciencecenter.org to enhance your learning experience.

In the Dassault Systèmes Planetarium group leaders set the schedule! Pick from any of our planetarium shows and our reservations staff will schedule your show at the time you select. Show selection requests are scheduled on a first-come, first-served basis, so make your reservation early to ensure your choice of show.

Zubenelgenubi's Magical Sky*

Grades: Preschool - 2 • (Through Feb. 3, 2006)

In this lively participatory program, characters Tracy the telephone pole, Hydro the hydrant and a talking Sun and Moon come alive as the daytime and nighttime skies are explored.

The Sky Above Mister Rogers' Neighborhood®* (Opens Feb. 7, 2006)

Grades: Preschool - 1

Young audiences will smile and cheer as they learn about wonders of the night sky from some of their most trusted friends, Mister Rogers and characters from the Neighborhood of Make Believe.

The Little Star That Could*

Grades: Preschool - 3

Join a small yellow star as he searches the galaxy for his planets. This show is a perfect way of introducing young audiences to stars, star colors, planets and our solar system.

Solar System Adventure

Grades: 2-9

Explore the planets of our Solar System in this live, interactive show! Students will visit the Sun, the dusty plains of Mars and gaze at the rings of Saturn as we explore fascinating facts about each of the nine planets.

WSKY: Radio Station of the Stars

Grades: 2 -12

Tune in to a "Top 40 radio station" that knows what's up in the Universe. Hosted by two fictional DJs, Moondog Matt and Stella Sunspot, this entertaining and informative program features original hit singles, call-in segments with Dr. Cosmos, interplanetary weather reports with Sunny Skyler, solar system traffic reports, cosmic news and much more.

**Available with the Tiny Tots package.*



PLANETARIUM

Sky Tonight Series 2005-2006

Grades: 3-12

Explore objects visible in the seasonal night skies. Learn how to locate constellations, planets and more. We'll also preview upcoming celestial events.

Views of the Universe

Grades: 4-12

Students will explore the differences between objects and their place in the universe. We travel from the constellations to the solar system and beyond. Our virtual journey includes a trip through a nebula and into a black hole!

Journey to the Edge of Space and Time

Grades: 4-12 • (Opens Fall 2005)

This dynamic show takes the audience on a journey to super massive black holes, giant galaxy clusters, the universe's earliest moments, and even to parallel universes that challenge the imagination.

Saturn: Jewel of the Solar System

Grades: 4-12

Explore the ringed planet with the Cassini spacecraft mission now in orbit around this mysterious world. We'll look at Saturn's moons, rings and fascinating cloud features as well as present the latest findings from Cassini.

Blown Away: The Wild World of Weather

Grades: 4-12

Students will be placed inside a thunderstorm, swept into a tornado and whisked upwards for a view from space of dynamic weather.

• Helpful Planning Tips

Recommended Time: 50 minutes for most shows, 35 minutes for Zubenelgenubi's Magical Sky, The Little Star That Could, and The Sky Above Mister Rogers' Neighborhood®.

Packages: Available with the Planetarium Explorer, Double Dome Explorer and Space Spectacular packages.

Live Demonstrations, Shows & Programs

Our demonstration areas bring science to life! Take in a “hair-raising” show in the DTE Energy Sparks Theater, get hands-on in the Faurecia Workshop and enter the Robot Arena to learn about these fascinating machines.

DaimlerChrysler Science Stage

Live, interactive stage shows bring science to life! Participate and interact with our stage performers as they conduct exciting educational programs and presentations on the human body, music, space and more!

Show themes change 2 - 3 times a year and last approximately 30 minutes. SPACE RESERVATION REQUIRED.

DTE Energy Sparks Theater

Enter our amazing Faraday cage and witness the incredible “hair-raising” Sparks Electricity Show! “Spark-tacular” performers demonstrate how electricity affects the world in all forms: Electro-Magnets, Static Electricity, Plasma and States of Matter. Behold our shocking Tesla Coil and the incredible Exploding Wire!

Demonstrations last approximately 30 minutes. SPACE RESERVATION REQUIRED.



Faurecia Workshop

Experience hands-on demonstrations and activities for all ages in our Faurecia Workshop. Discover many science topics with activities such as Wonders of Water, Fool Your Senses, Dry Ice Exhibitions and more.

Demonstrations last approximately 30 minutes.

Robot Arena

Meet KR 15, our PC-controlled KUKA Robotic Arm. Learn and be astounded as we explain how robots are ideal for automated applications. Test your knowledge concerning the age-old debate “Man vs. Machine.” Watch a Pneumatic Ball Sorter “magically” sort balls by color and learn how an air computer works.

Demonstrations last approximately 15-20 minutes.



➔ **Check our website,
www.detroitsciencecenter.org,
for new shows and demonstrations
coming in winter/spring 2006!**



Helpful Planning Tips

Grades: 1-12

Packages: Available with all packages.

SPACE

A JOURNEY TO OUR FUTURE™

Produced by Clear Channel Exhibitions



Presented in
collaboration
with NASA

Made Possible By



LOCKHEED MARTIN

Limited Engagement!

Nov. 5, 2005 – May 14, 2006

SPACE: A Journey to Our Future is the nation's largest touring, interactive exhibition based on space exploration. **SPACE** is so comprehensive that it will be presented in both the 9,000 sq. ft. Science Hall (Level 4) and the 3,000 sq. ft. Special Exhibits Gallery (Level 2) of the Science Center!

This extraordinary exhibit, produced in collaboration with NASA, will ignite your desire for discovery, sparking imaginations and inspiring new generations of explorers to dream of the possibilities that lie ahead.

Using immersive scenic elements, the most advanced interactive exhibits and state-of-the-art projection and audio technology, the exhibit brings this epic story of SPACE to life. Visitors will take a journey through the past, present and future of space exploration, including four-themed exhibit areas:

- **Dare To Dream.** Through the centuries countless dreamers who dared to find the answers to our very existence have shaped humankind's knowledge of our place in the universe. This exhibit pays tribute to those dreamers and their amazing achievements.
- **A Dream Come True.** To this day we are still awed by the image of the Earth as seen from the Moon during the Apollo program. This exhibit will remind us of that remarkable achievement and introduce us to people who made that dream come true.
- **Living the Dream.** Today, all over the world, people and organizations are creating and envisioning new tools and ideas that are helping us unlock many secrets to the universe and that will propel us into our future adventures in space. These people, and we as a planet, are truly living the dream!
- **Dream Of Tomorrow.** The final portion of the exhibit will open our eyes to the wonders that our future holds, and introduce us to today's dreamers who like those before them dare to imagine what secrets the Cosmos holds.

A teacher's activity guide for this exhibit is available to download online at www.detroitsciencecenter.org.

• **Helpful Planning Tips**

Recommended Time: 1.5 hours

Grades: Kindergarten – 12

Packages: Available with Explorer Plus and Space Spectacular packages.



We can bring science to you through our Traveling Science programs. Enhance fun and learning for schools, groups, “family science nights” and other occasions. Available during days and evenings.

Group Programs

It's Alive in Eekstein's Lab • For Families and Children Ages 6 - 13

Dr. Eekstein and Igor have a dilemma! They need help from volunteers, as they explain different functions of the brain, circulatory system, heart, lungs and digestive track in order to give their creature life.

- Each show is 30 minutes, Maximum audience of 250 people

Dr. Gyro • For Families and Children Ages 10 – 13

Dr. Gyro's sideshow is running amuck, as Mr. Fred DeFraud tries to trick volunteers into completing impossible stunts. Fortunately, his new apprentice is a physics genius who can explain motion, center of mass, angular momentum, and the structure of a monstrous human table. A Segway Human Transporter is used as part of this show.

- Each show is 30 minutes, Maximum audience of 250 people

Science Make-and-Takes • For Families and Children Ages 6 - 13

Our make-and-take activities not only teach, but are fun and give participants a project to bring home. Each activity takes approximately 5 – 15 minutes. We have a variety of activities on different subjects for all age levels. Make-and-takes may be combined with our other programs.

- Includes supplies for two activities. \$15 supply charge for each additional activity and/or additional 30 students
- Each session is 30 minutes, Maximum 50 students per session
(Can be scaled up for more students or longer time for additional fees)

STARLAB • For Families and Children Ages 6 - 13

The STARLAB is an inflatable, portable planetarium. During each session, our educator will give tours of the current sky using the STARLAB's star projector, featuring bright stars, constellations, planets and the moon.

- Each session 30 minutes (2 sessions/hour)
- Maximum 25 participants per session
- STARLAB is an indoor planetarium with a requirement of a 25' x 30' footprint, minimum ceiling height of 10', and a grounded outlet.

Prices

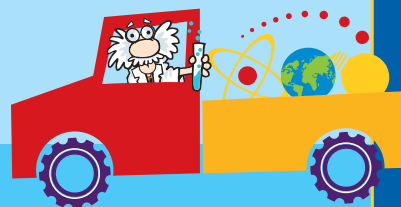
- \$300 for first hour of programming
- \$150 for each additional hour
- Includes two staff members, setup and takedown
- Travel included within 30 miles of The New Detroit Science Center.
Additional \$.50/mile beyond 30 miles.



Workshops

Workshops are programs designed for small group settings. In some cases, more than one workshop of the same type may be run simultaneously.

- Each workshop lasts 30 – 90 minutes
- Maximum 30 participants per workshop
- Teacher, chaperone or group leader must be present



Early Childhood Programs • *Preschool – K (30 minutes)*

How does your garden grow? Explore how plants grow and develop a green thumb as a new seed life is started.

Color Your World Experiment with prisms and color filters to look at the products of color mixing.

Both programs include a story time and group discussion as well as a craft project and exploration station.

Early Elementary Workshops • *Grades 1 – 2 (30 minutes)*

Sky Gazers Participants will learn about what they see in the night sky, including the phases of the moon.

Weather Watchers Participants will learn about what makes weather and learn about tools to observe and measure weather.

Upper Elementary Workshops • *Grades 3 – 5 (45 minutes)*

Sounds All Around Participants will use rulers, straws and some more advanced equipment to learn about vibrations and sounds.

Our Place in Space Participants will compare the “residents” of our solar system. They will explore how Earth fits into its neighborhood.

Middle School Workshops • *Grades 6-8 (60 minutes)*

Sounds All Around Participants will use rulers, straws and some more advanced equipment to learn about vibrations and sounds.

It's Electrifying Participants will use hand generators, simple boards and other devices to build simple electric circuits and learn how they work.

High School Workshops *(90 minutes)*

Learning through LEGOs Through programs developed by LEGO Education and The New Detroit Science Center, participants will use basic bricks and more advanced parts to learn science.

Atoms and Molecules This program is designed to teach the basics about atoms and molecules. Participants will build models from LEGO parts to learn about atoms and molecules.

Learning through LEGOs This program is best-suited for high school biology students. Participants will learn about cell division, genes and traits through LEGO parts.

Prices

- \$200 for first hour of programming
- \$100 for each additional hour (within the same day and no break longer than one hour)
- Includes staff, setup and takedown
- Travel included within 30 miles of The New Detroit Science Center. Additional \$.50/mile beyond 30 miles.

Traveling Science Reservations: **Call Reservations at 313.577.8400, Option 5.**

Traveling Science programs should be booked at least four weeks in advance. The Reservations Department will confirm program availability for the requested date and time within 3 business days of inquiry.

A 50% non-refundable deposit is due within two weeks of making the reservation with the remaining balance due two weeks before the scheduled program. Program is subject to cancellation if deposit or payment is not received upon due dates. Groups canceling a program less than two weeks before the reserved date will receive a credit to be used at The New Detroit Science Center. All programs subject to availability.

Payment can be made by check, MasterCard, Visa or American Express. Purchase orders are not accepted.



Scout it Out!

Scout workshops at The New Detroit Science Center offer hands-on activities and themed educational programs in the Ford Learning Resource Center. All workshop activities are designed to fulfill badge/pin requirements while providing scouts with a unique experience.

Daisy • Brownie • Cub Scouts Workshops

Cost: \$10 per scout / \$7 per adult* • Each workshop is 3 hours

	Recognition	Date	Start Time
Daisy	Daisy Science Day	January 29, 2006	1:00 p.m.
Brownie Try-its	Senses	February 12, 2006	1:00 p.m.
Brownie Try-its	Wonders	April 9, 2006	1:00 p.m.
Brownie Try-its	Eco-Explorer	April 30, 2006	1:00 p.m.
Tiger	Astronomy Belt Loop**	February 26, 2006	1:00 p.m.
Tiger	Science Belt Loop	April 01, 2006	1:00 p.m.
Wolf	Astronomy Pin**	December 4, 2005	1:00 p.m.
Wolf	Science Pin**	April 2, 2006	1:00 p.m.

Junior • Webelos Scouts Workshops

Cost: \$15 per scout / \$7 per adult* • Each workshop is 3.5 hours

	Badge	Date	Start Time
Junior Scouts	Making it Matter	December 10, 2005	1:00 p.m.
Junior Scouts	Science Discovery	March 12, 2006	1:00 p.m.
Junior Scouts	Outdoors in the City	May 21, 2006	1:00 p.m.
Webelos	Geologist	October 15, 2005	1:00 p.m.
Webelos	Engineer	March 5, 2006	1:00 p.m.
Webelos	Scientist	May 7, 2006	1:00 p.m.

- Above workshops include a Science Center patch for all participants and an activity badge, pin or recognition for scouts.
- Maximum number for Daisy, Brownie, Cub, Junior and Webelos scout workshops is 75 scouts.

Cadette / Senior Scout Interest Projects • Boy Scout Merit Badge Workshops

Cost: \$20 per scout / \$5 per adult* • Each workshop is 5 hours

	Badge	Date	Start Time
Cadette/ Senior Girl	Space Explorations**	November 19, 2005	10:00 a.m.
Cadette/ Senior Girl	Inventions and Inquiry	March 11, 2006	10:00 a.m.
Boy Scout	Chemistry	October 22, 2005	10:00 a.m.
Boy Scout	Astronomy**	February 25, 2006	10:00 a.m.
Boy Scout	Space Explorations**	March 25, 2006	10:00 a.m.
Boy Scout	Weather	June 2, 2006	10:00 a.m.

- Workshop includes Science Center patch for scouts only.
- Cadette/Senior Girl scouts also may register for Boy Scout Merit Badge workshops.
- Maximum of 60 scouts for Cadette/Senior and Boy Scouts workshops.

Additional Notables

- Scouts should bring a bag lunch to the Science Center. Time will be scheduled during each workshop to eat. Food and beverages also are available for purchase in the Science Café.
- Scouts should plan to wear their scout uniforms.
- The Science Center requires a 1 adult/10 scouts chaperone ratio for workshops. Additional adults must pay the adult workshop fee. *Cost is per adult exceeding the required one to 10 chaperone ratio.
- **Cost for space-related workshops is \$13 per scout / \$7 per adult for Daisy, Brownie and Cub Scouts and \$23 per scout / \$8 per adult for Cadette / Senior Scouts and Boy Scouts. Cost includes admission to the *Space: A Journey to Our Future* exhibit and an exhibit patch.

workshops + camp-ins



Camp-Ins at The New Detroit Science Center offer scouts hands-on fun in a one-of-a-kind, learning environment. Each overnight program includes theme-related activities, a late night snack, nutritious breakfast and a morning IMAX® Dome Theatre film. All participants receive a Science Center patch.

Cost: \$30 per person

\$35 per person for *Star Search* (Featuring *SPACE: A Journey to Our Future*)

Time: 7:00 p.m. to 9:00 a.m.

Wizards Academy

Put on your magician's hat and get ready to conduct experiments at The New Detroit Science Center's very own Wizards Academy. This adventure offers a full night of hands-on activities from many areas of science including chemistry, physics and biology.

Girls: January 27, 2006

Boys: February 10, 2006

Recommended for scouts in grades 3-6

Star Search

Blast off into a journey of astronomy and space exploration. Scouts will have an eventful night of star gazing and constellation mythology. As a special bonus, all participants will be able to explore our traveling exhibit *SPACE: A Journey to Our Future*.*

Girls: March 3, 2006

Boys: March 17, 2006

Recommended for scouts in grades 3-6

Eekstein's Engineering

Dive into the world of engineering and explore how science impacts our daily lives and how it will lead us into the future. Scouts will engineer vehicles and test forces acting upon them in this very hands-on, overnight experience.

Girls: April 7, 2006

Boys: April 28, 2006

Recommended for scouts in grades 3-6

Unsolved Mysteries

Prepare yourself for an overnight mystery and interactive, crime-solving experience with this Camp-In favorite. Working as a scout sleuth, participants will jump into the basics of forensic science by collecting clues, conducting experiments and studying fingerprints to solve a crime.

Girls: May 5, 2006

Boys: May 19, 2006

Recommended for scouts in grades 3-6

Attention all Scouts, Schools or Community Groups! Plan a Private Camp-In!

Groups of 145 or more can choose any of our four Camp-In programs to create an exclusive experience at the Science Center. Dates are limited and a minimum lead time of two months is required. Call today!

Camp-In Notables

- The Science Center requires a 1 adult/10 scout chaperone ratio for Camp-Ins. All chaperones must pay the \$30 Camp-In fee (\$35 for Star Search Camp-in).
- A minimum of 100 participants are required and a maximum of 200 participants are allowed per Camp-In.
- Balance and final count due two weeks before start of program.
- All sales final and non-refundable.
- *Space exhibit patch available with Star Search Camp-In.

camp-ins

birthday parties

WE HAVE BIRTHDAY PARTIES DOWN TO A SCIENCE!

Create an unforgettable birthday experience at The New Detroit Science Center. Our lively environment, combined with a fun-filled birthday package, will thrill every guest on your invitation list. Simply select any of our birthday packages and call 313.577.8400, Option 5, for a perfect party.

Ultimate Birthday Package

Includes General Admission, a hands-on science activity, an IMAX® Dome Theatre film and a Dassault Systèmes Planetarium show.

Members: \$18 / Non-Members: \$20 per person

Super Birthday Package

Includes General Admission and your choice of two: a hands-on science activity, an IMAX® Dome Theatre film or a Dassault Systèmes Planetarium show.

Members: \$14 / Non-Members: \$16 per person

Great Birthday Package

Includes General Admission and your choice of either a hands-on science activity, an IMAX® Dome Theatre film or a Dassault Systèmes Planetarium show.

Members: \$12 / Non-Members: \$14 per person

All birthday party packages include reserved party space for two hours, a Science Center t-shirt for the birthday child and a personal Science Center host/hostess. Birthday parties are held on Saturdays and Sundays during the school year. Summer parties are available Monday – Saturday from June 20 – Sept. 3, 2005. Reservations are required at least two weeks in advance.

Our Science Café can provide snacks or lunch for your party. Call 313.577.8400, ext. 471, for information. Guests may bring birthday cake to the Science Center and are allowed to bring bag lunches. Any other catered services or food deliveries are not allowed.



Hands-on Science Activities

Enjoy one of these unique experiences when you choose a hands-on science activity as part of your party package:

Wee Wonders: Designed for children ages 2-6, our Wee Wonders program is held in our bright and very cheery SBC Children's Gallery. This special program includes a make-and-take craft activity and story time facilitated by a Science Center educator.

Bubble Party: This activity, great for ages 5-8, encourages children to experiment with many different tools (including their bodies) to create bubbles. Through play and with guidance from a science educator, children discover how bubbles are made, including extra large ones.

Out-of-this-World: Budding young astronomers ages 7-11 will delight in learning Newton's 1st and 3rd laws of motion when they launch balloon rockets during this space-tacular activity. Science educators will showcase the effects of meteorites on the moon.

planning your visit

- The New Detroit Science Center is a **NO SMOKING** and **NO GUM CHEWING** facility.
- **DUE TO IMPROVED SECURITY MEASURES AND FOR YOUR SAFETY, BACK PACKS ARE NOT ALLOWED IN THE SCIENCE CENTER.** Purses also may be subject to search.
- Each group chaperone should have a map, a list of the group members, and a list of your program names and locations.
- Please **arrive at program locations at least 10 minutes before** the program is scheduled to begin. Late arrivals will not be admitted to programs. **There is no late seating for the IMAX® Dome Theatre and Dassault Systèmes Planetarium.**
- If you must leave during a presentation of the IMAX® Dome Theatre, please exit and re-enter through the rear of the theater.
- If you must leave during a Dassault Systèmes Planetarium program, you may exit; however, **re-entry will not be allowed during the program.**
- No food or beverage is allowed in any theater or stage.
- Chaperones should remain with the group throughout the visit and be attentive listeners in the programs. We ask that cell phones not be used in program spaces.
- The SBC Children's Gallery is designed for Preschool and Kindergarten age children only.
- Chaperones are required to stay with the group while they shop in the Science Store or dine in the Science Café.
- **Lunch periods are 30 minutes ONLY.** Please adhere to your scheduled lunchtime in order to make sure that the space is clean and ready for the next group. Paper lunch sacks are encouraged.
- As unlikely as it may be, we reserve the right to ask your group to leave the Science Center if your group displays inappropriate behavior or disrespect for the Science Center or other guests.
- If you have guests that will be using wheelchairs or have other mobility requirements, please let us know when making your reservation so that we may better accommodate your group's needs.



parking

Buses may drop off students by entering the Science Center parking lot off of John R Street. Buses may park along Warren Avenue, John R Street or Farnsworth Avenue. Bus drivers receive free General Admission, but must pay the group rate for the IMAX® Dome Theatre, Dassault Systèmes Planetarium and special exhibit admission.

Groups arriving by individual cars pay a reduced rate of \$3 per car.

prior to your arrival

- Provide a copy of your itinerary to all chaperones. It is important for your chaperones to know the scheduled destinations.
- Utilize the pre-visit activities available at www.detroitsciencecenter.org before your field trip. Students will be able to better focus on the activities and learn important science concepts when they know what is expected of them before they arrive.
- Copy and distribute maps for all bus drivers to ensure a timely arrival at the Science Center. Please refer to www.mdot.state.mi.us for construction updates and road closures.

reservation procedures

To make a reservation, call 313.577.8400, Option 5, weekdays from 8:00 a.m.–5:00 p.m. It is recommended that reservations be made at least three weeks prior to your visit. Please have the following information ready when calling:

- Group Name
- Group Address
- Telephone No. / Fax No. / E-mail
- Date / Arrival Time (select 3 dates)
- Group Contact
- Number of Students
- Number of Chaperones
- Number of Additional Adults
- Package and Lunch Option
- Method of Payment

CHAPERONES

Groups are required to provide 1 chaperone for every 10 students. Special needs groups and Preschool – Kindergarten are encouraged to provide 1 chaperone for every 5 students. All chaperones per the above ratio receive free General Admission, but there is a charge for program, theater and special exhibit admission for these chaperones. Any adults above and beyond the 1:10 or 1:5 ratios will be charged the package rate.

DEPOSIT POLICY

1. A 50% non-refundable deposit is due within 2 weeks of making the reservation.
2. This will guarantee your show or program in the theaters or stages.
3. Groups not submitting their deposit will lose their reservation and their chaperone-ratio discount rate.
4. The remaining balance is due 2 weeks before the scheduled visit or upon arrival.
5. Groups that arrive with more than their final reserved count will be charged for each person over the reserved amount. Should the arrival date attendance fall lower than the confirmed amount, NO REFUND WILL BE ISSUED. Instead, a credit will be given that can be used toward a future group visit made within one year.
6. Purchase orders are not accepted for deposits or payments. Mastercard, Visa, American Express and personal checks are accepted.

CONFIRMATION PACKET

Once your deposit has been received, a confirmation letter will be sent. It will include the day's schedule, Science Center information and a map. Please review this information with your students, chaperones and bus driver before arriving.

LUNCH OPTIONS

Whether you brown bag it or order from our Science Café Lunch Program, be sure to give your students the fuel that they need to learn! Our Lunch Program offers a variety of hot or cold entrees for \$6 per students or adult. Lunch space reservations are required when making your field trip reservation. Please allow 30 minutes for lunch. Due to space availability, lunch areas are on a first come, first served basis.

CONTACT INFORMATION

THE NEW DETROIT SCIENCE CENTER
5020 John R Street, Detroit, MI 48202
www.detroitsciencecenter.org
fieldtrips@sciencedetroit.org

Reservation Department Office Hours:
Weekdays, 8:00 a.m. – 5:00 p.m.



This form is for planning purposes only. To make your reservation, contact The New Detroit Science Center at 313.577.8400, Option 5, weekdays, 8:00 a.m. – 5:00 p.m. for date and program availability. When calling, please have the following information ready:

PACKAGE OPTIONS

Select the package choice that matches your desired field trip and complete the corresponding information.

\$4 TINY TOTS Includes an SBC Children's Gallery Program and Dassault Systèmes Planetarium Show.

Select choice of show:

_____ *Zubenelgenubi's Magical Sky*
(through Feb. 6, 2006)

_____ *Little Star*

_____ *Mister Rogers' Neighborhood®*
(starts Feb. 7, 2006)

\$6 EXPLORER

Includes Science Center General Admission with:

- DaimlerChrysler Science Stage show
- DTE Energy Sparks Theater

\$8 PLANETARIUM EXPLORER

Includes Explorer package *PLUS*:

- Dassault Systèmes Planetarium show

Select choice of show:

1st Choice: _____

2nd Choice: _____

3rd Choice: _____

\$10 EXPLORER PLUS

Includes Explorer package *PLUS* choice of ONE:

- Traveling Exhibit *SPACE: A Journey to Our Future*
OR
- IMAX® Dome Theatre film

Select choice of show:

1st Choice: _____

2nd Choice: _____

3rd Choice: _____

\$12 DOUBLE DOME EXPLORER

Includes Explorer package *PLUS*:

- IMAX® Dome Theatre film
AND
- Dassault Systèmes Planetarium show

List film/show preferences:

1st Choice: _____ + _____

2nd Choice: _____ + _____

3rd Choice: _____ + _____

\$14 SPACE SPECTACULAR This package includes the traveling exhibit *SPACE: A Journey to Our Future* and your choice of TWO:

- Exploration Time in our hands-on exhibit laboratories

OR

- IMAX® Dome Theatre film

Select choice of show:

1st Choice: _____

2nd Choice: _____

3rd Choice: _____

OR

- Dassault Systèmes Planetarium show

Select choice of show:

1st Choice: _____

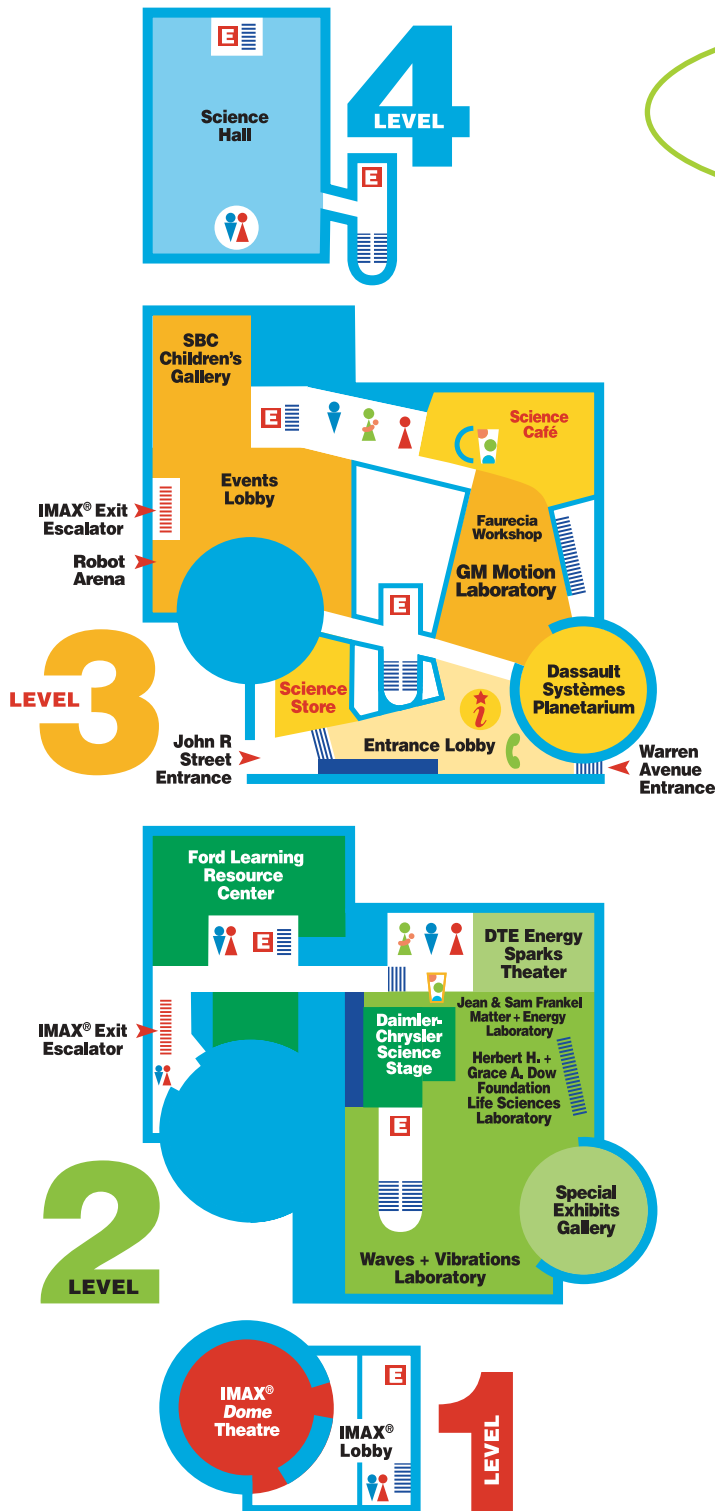
2nd Choice: _____

3rd Choice: _____

* All groups are required to provide 1 chaperone for every 10 students. Special needs groups and Preschool – Kindergarten are encouraged to provide 1 chaperone for every 5 students. One chaperone for every 10 students receives free Explorer Package (\$6), but must pay the group rate for IMAX® Dome Theatre, Dassault Systèmes Planetarium and special exhibit admission. Adults over the 1:10 ratio will be charged the group package rate.

All programs, prices and policies subject to change.

map



AMENITIES

Science Café	Level 3
Entrance Lobby	Level 3
Restrooms – Family	Levels 2 • 3
Restrooms – Men's & Women's	Levels 1 • 2 • 3 • 4
Science Store	Level 3
Telephone	Level 3
Tickets & Information	Level 3
Vending Machines	Levels 2 • 3

FORD LEARNING RESOURCE CENTER

Applied Sciences Classroom	Level 2
Earth Sciences Classroom	Level 2
Life Sciences Classroom	Level 2
Physical Sciences Classroom	Level 2
Space Sciences Classroom	Level 2

LABORATORIES & EXHIBIT AREAS

Events Lobby	Level 3
GM Motion Laboratory	Level 3
Herbert H. & Grace A. Dow Foundation Life Sciences Laboratory	Level 2
Jean & Sam Frankel Matter & Energy Laboratory	Level 2
SBC Children's Gallery	Level 3
Science Hall	Level 4
Special Exhibits Gallery	Level 2
Waves & Vibrations Laboratory	Level 2

THEATERS, STAGES & DEMONSTRATIONS

DaimlerChrysler Science Stage	Level 2
Dassault Systèmes Planetarium	Level 3
DTE Energy Sparks Theater	Level 2
Faurecia Workshop	Level 3
IMAX® Dome Theatre	Level 1
Robot Arena	Level 3



The New Detroit Science Center is Wheelchair Accessible

Listening Devices Available at the Tickets + Information Desk

amenities

ACCESSIBILITY

The Science Center is accessible to visitors with disabilities. Elevators and ramps serve all public areas including the IMAX® *Dome* Theatre and Dassault Systèmes Planetarium. A limited number of wheel chairs are available at no cost. The New Detroit Science Center is wheelchair accessible. Listening devices are available at the Visitor Services desk.

ATM

The ATM is located in the front lobby on Level 3.

COAT RACKS & LOCKERS

Complimentary coat racks are available in the front lobby on Level 3. Lockers are available for 50 cents each on Level 2. The New Detroit Science Center is not responsible for lost or stolen items.

SCIENCE CAFÉ

Our Science Café offers visitors a choice of simple snacks such as ice cream, soft pretzels and cookies or a complete meal with sandwiches, salads, pizzas and even a daily hot entrée.

SCIENCE STORE

To reinforce the Science Center experience, students have the opportunity to shop at our Science Store. If you do not have time to shop, special arrangements to purchase Science Store products can be made in advance. Please call 313.577.8400, ext. 422.

WEBSITE

Check our website, www.detroitsciencecenter.org, for information on new shows, programs, exhibits, events and group trip resources.



Pre-Planning Visit

Teachers, show your valid teacher I.D. for a FREE pre-planning visit to the Science Center prior to your scheduled field trip.

Cannot be combined with any other offer. Does not include IMAX® *Dome* Theatre and Dassault Systèmes Planetarium or traveling exhibits. No cash value.

Valid photo I.D. required.

There's Still Time to See Two Great Traveling Exhibits!



Don't miss out on your chance to experience
*Target America: Opening Eyes to the Damage
Drugs Cause* and the *Amazing Music Studio*.
Both exhibits close Oct. 2, 2005.



**LOOK INSIDE FOR YOUR
EXCLUSIVE SPACE:
A JOURNEY TO OUR FUTURE
CLASSROOM CALENDAR!**

**MEMBERSHIP
discounts**

**Teachers receive 20% off any level of Science Center
membership. For details, call 313.577.8400, ext. 433.**



5020 John R Street
Detroit, MI 48202

NONPROFIT ORG.
U.S. POSTAGE
PAID
DETROIT, MI
PERMIT NO. 5919
